

सत्यमेव जयते

ACCOUNTS *at a* GLANCE 2013-14

Government of India
Controller of Accounts
Ministry of Power
New Delhi

PREFACE

It is indeed a great pleasure to present the Twenty Third issue of “**Accounts at a Glance**” of the Ministry of Power for the year 2013-14.

The Ministry of Power seeks to achieve its vision of 'reliable, adequate and quality power for all at reasonable prices' by providing necessary support and enabling policy framework for integrated development of power infrastructure in the country to meet the requirements of the growing economy and to meet the requirements and aspirations of the people for quality power particularly of poor households in rural areas.

We have endeavored to present the accounting and financial information in a logical, cohesive and analytical way through tables, flow charts, diagrams, graphs etc in this edition of “**Accounts at a Glance**”. This document contains accounts highlights of the ministry, expenditure and receipts analysis and information on other areas e.g. investments, loans and internal audit.

I hope this document will prove to be user friendly and informative. We welcome the suggestions to enable us to improve the future issues.

30th September 2014
New Delhi

Sanjai Singh
Controller of Accounts
Ministry of Power



CONTENTS

Chapter	Subject	Pages
1	Introduction	1 to 3
2	Accounting Organization	4 to 11
3	Accounts Highlights of the Ministry	12 to 18
4	Receipts Analysis	19 to 24
5	Expenditure Analysis	25 to 40
6	Other Areas (Investments, Loans & Guarantees)	41 to 55
7	Internal Audit	56 to 60



CHAPTER-1

INTRODUCTION

The Ministry of Power started functioning independently with effect from 2nd July, 1992. Earlier it was known as the Ministry of Energy comprising the Departments of Power, Coal and Non-Conventional Energy Sources. Electricity is a concurrent subject at entry number 38 in the List III of the Seventh Schedule of the Constitution of India.

The Ministry of Power is mainly responsible for evolving general policy in the field of electrical energy. The main items of work dealt with by the Ministry of Power are given below:

- General Policy in the electric power sector and issues relating to energy policy and coordination thereof (Details of short, medium and long term policies in terms of formulation, acceptance, implementation and review of such policies, cutting across sectors, fuels, regions and intra-country and inter-country flows).
- All matters relating to hydro-electric power (except small/mini/micro hydel projects of and below 25 MW capacities) and thermal power and transmission & distribution system network.
- Research, development and technical assistance relating to hydro-electric and thermal power transmission system network and distribution systems in the States/UTs.
- Administration of Electricity Act, 2003 (36 of 2003), the Energy Conservation Act, 2001(52 of 2001), the Damodar Valley Corporation Act, 1948 (14 of 1948) and Bhakra Beas Management Board as provided in the Punjab Reorganisation Act, 1966 (31 of 1966).
- All matters relating to Central Electricity Authority and Central Electricity Regulatory Commission.
- Rural Electrification.
- Power schemes and issues relating to Power supply/development schemes/ programmes / decentralized and distributed generation in the States and Union Territories.
- All matters concerning energy conservation and energy efficiency pertaining to Power Sector.

- Matters relating to the following Undertakings / Organizations:
 - a. Damodar Valley Corporation (DVC)
 - b. Bhakra Beas Management Board (except matters relating to irrigation) (BBMB)
 - c. NTPC Limited.
 - d. National Hydroelectric Power Corporation Limited (NHPC)
 - e. Rural Electrification Corporation Limited (REC)
 - f. North Eastern Electric Power Corporation Limited (NEEPCO)
 - g. Power Grid Corporation of India Limited (PGCIL)
 - h. Power Finance Corporation Limited (PFC)
 - i. THDC India Limited
 - j. Satluj Jal Vidyut Nigam Limited (SJVNL)
 - k. Central Power Research Institute (CPRI)
 - l. National Power Training Institute (NPTI)
 - m. Bureau of Energy Efficiency (BEE)

These are the main wings of the Ministry:-

1. Thermal
2. Hydro
3. Transmission
4. Distribution
5. Energy Conservation
6. Ultra Mega Power Projects
7. Rural Electrification
8. Restructured Accelerated Power Development and Reforms Programme (RAPDRP)
9. Reforms and Restructuring
10. Operation & Maintenance
11. Administration
12. Finance

The wings are headed by a Joint Secretary/ Additional Secretary.

The Ministry also provides assistance to Rural Electrification, State Electricity Boards/State Power Distribution Companies, Central Sector Power Projects, Power Development in Union Territories, Inter-State Transmission Lines and is also concerned with matters relating to Public Sector Enterprises and Autonomous Bodies under its administrative control.

ATTACHED OFFICE:

CENTRAL ELECTRICITY AUTHORITY

CEA advises the Ministry of Power on technical & economic matters. Central Electricity Authority has been constituted under Section 3(1) of the Electricity (Supply) Act, 1948 which has since been substituted by part IX of the electricity act, 2003.

PUBLIC SECTOR UNDERTAKINGS:

- (a) NTPC Ltd, New Delhi.
- (b) National Hydro-Electric Power Corporation, New Delhi (NHPC)
- (c) North Eastern Electric Power Corporation, New Delhi (NEEPCO)
- (d) Power Grid Corporation of India Limited, New Delhi (PGCIL)
- (e) Power Finance Corporation, New Delhi (PFC)
- (f) Rural Electrification Corporation, New Delhi (REC)

JOINT VENTURE CORPORATION:

- (a) Satluj Jal Vidyut Nigam Ltd (formerly Nathpa Jhakri Power Corporation).
- (b) THDC Ltd.

STATUTORY BODIES (COMMERCIAL):

- (a) Damodar Valley Corporation, Kolkata
- (b) Bhakra Beas Management Board, Chandigarh

STATUTORY BODIES (NON-COMMERCIAL):

- (a) Central Electricity Regulatory Commission (CERC), New Delhi
- (b) Appellate Tribunal for Energy (ATE), New Delhi
- (c) Bureau of Energy Efficiency (BEE)
- (d) Joint Electricity Regulatory Commission (JERC) Goa & UTs, Gurgaon

AUTONOMOUS BODIES:

- (a) Central Power Research Institute (CPRI), Bengaluru
- (b) National Power Training Institute (NPTI), Faridabad

Major Schemes under the administrative control of Ministry of Power

- (a) Restructured Accelerated Power Development and Reform Programme (R-APDRP)
- (b) Rajiv Gandhi Grameen Vidyutikaran Yojna (RGGVY)
- (c) Bureau of Energy Efficiency (BEE) & Energy Conservation (EC)
- (d) Central Power Research Institute (CPRI)
- (e) National Power Training Institute (NPTI)

CHAPTER-2

ACCOUNTING ORGANISATION

Secretary (Power) is the Chief Accounting Authority of Ministry of Power (MOP) and Controller of Accounts is the head of Accounting Organisation of MOP. The Organisation Chart of the Accounting set up is shown in Chart 2.1.

The main responsibilities of Office of Controller of Accounts, MOP are:

- i. The accounting information generated in the various Pay and Accounts Offices is consolidated in the Principal Accounts Office for each month and then submitted to Controller General of Accounts (CGA), Department of Expenditure, Ministry of Finance.
- ii. Payment & Receipt functions through the Pay and Account Offices and Cheque Drawing DDOs located at various places.
- iii. Preparation of Annual Headwise Appropriation Accounts and Statement of Central Transactions and material for Finance Accounts for the Ministry.
- iv. All banking arrangements with Receipts and Payment functions.
- v. Conducting Internal Audit of various Offices/ Organizations/Schemes of Ministry of Power.
- vi. Preparation of Receipt Budget of Ministry of Power
- vii. Technical Advice on accounting and budgeting matters including accounting procedures & heads of accounts.
- viii. Nodal office for monitoring of Action Taken Notes on CAG reports/Paras.
- ix. Preparation of various weekly/monthly/quarterly & annual accounting, expenditure and receipt reports.
- x. Administration related work & Coordination of functioning of all Pay & Accounts Offices of Ministry of Power.
- xi. Training of officials to enhance their skills and knowledge particularly in accounts, budget, internal audit and information technology.
- xii. With the thrust towards computerization in every sphere of life, the office of the Controller of Accounts is utilizing the software COMPACT (PAO2000) and E-Lekha for various levels of computerizations for consolidating monthly accounts and generating various statements. It is done at two levels:-
 1. PAOs level - COMPACT(PAO2000)
 2. Principal Accounts Office level - E-Lekha.

The E-Lekha software is also generating certain reports such as: - Consolidation of PAOs accounts, Grant wise reports, Major Head wise reports, Revenue receipts, PAO wise consolidation reports.

E-Lekha

E- lekha is e-governance initiative by the Office of Controller General of Accounts, Ministry of Finance. Under this all PAOs are uploading the daily abstract of accounts on the e-lekha website on day-to- day basis. The expenditure and receipt of the ministry can be viewed from the Link e-Lekha on the website cga.nic.in.

Defined Contribution Pension Scheme-NPS

A New Pension Scheme (NPS) called Defined Contribution Pension Scheme introduced by the Government of India w.e.f 1.1.2004 has been implemented in the Ministry. All PAOs and CDDOs of the ministry are remitting the subscribers contribution to the trustee bank of NSDL and the subscriber's contribution files are being uploaded on the NSDL website regularly. There were 171 subscribers under New Pension Scheme in M/o Power as on 31/3/2014.

E-Payment

The Controller General of Accounts, Ministry of Finance has developed a facility in COMPACT for electronic payment (e-payment through digitally signed electronic advices). This has almost replaced the system of payment through cheques while leveraging the COMPACT application running in all Pay & Accounts Offices of all Ministries/Departments of Central government.

The e-payment system is a fully secured web based system of electronic payment services which introduces transparency in government payment system. Payment from the Government under this system is made by credit of money directly into the bank account of the payee through digitally signed e-advices generated from COMPACT through the 'Government e-payment Gateway (GePG)' on a secured communication channel.

Government e-payment Gateway (GePG) is a portal which enables the successful delivery of payment services from Pay & Accounts offices for online payment transactions. The GePG serves as middleware between COMPACT application at PAOs and the Core Banking Solution (CBS) of the banks/RBI and facilities include automating the manual registration process, e-payment advice, and e-scrolls communication. In Ministry of Power, Rs.5597.37 Crores have been paid through e-payment in 2013-2014 that constitute 99.94% of total payments.

Public Financial Management System (PFMS)

The Public Financial Management System is a Central Sector Plan Scheme of the Planning Commission and is being implemented by the Office of Controller General of Accounts. The scheme aims at establishing a suitable on-line Management Information System and Decision Support System for the Plan Schemes of the Government of India. The System is envisaged to track fund disbursement from government of India up to the

last beneficiary/recipient under Plan Schemes and ultimately report on fund utilization at different levels of implementation on a real time basis. This shall not only make monitoring of the Plan Schemes more effective but also augment efficiency of Public Financial Management. In Ministry of Power though details of sanctions and releases under all plan schemes are being entered into PFMS, presently RGGVY (Rajiv Gandhi Grameen Vidyutikaran Yojna) is taken up for detailed implementation under PFMS. Now all the agencies in RGGVY are registered in the PFMS.

Reports

The following reports are prepared in Principal Accounts Office on the basis of Data submitted by the PAOs:-

- (i) Appropriation Accounts
- (ii) Finance Accounts
- (iii) Appropriation Audit Register
- (iv) Put Through and PSBS (Public Sector Bank Suspense) Report
- (v) DDR (Debt Deposit & Remittance) Ledger Head
- (vi) IEBR (Internal & Extra Budgetary Resources) report.
- (vii) Net Expenditure report
- (viii) Expenditure Reports pertaining to Income Tax, Interest, Pension, Loan, CGEGIS etc.
- (ix) Quarterly reports of Pay & allowances of all PAOs employees.
- (x) SCT (Statement of Central Transactions)
- (xi) Monthly/Progressive expenditure and receipts report.
- (xii) Weekly & monthly expenditure report for review of expenditure.
- (xiii) Weekly & monthly status of ATN on CAG Paras/ reports.
- (xiv) DDO wise Head of Account wise Budget monitoring (In PAOs)
- (xv) Release of loans, repayment & interest payment.
- (xvi) Quarterly Statements on Government Guarantees.

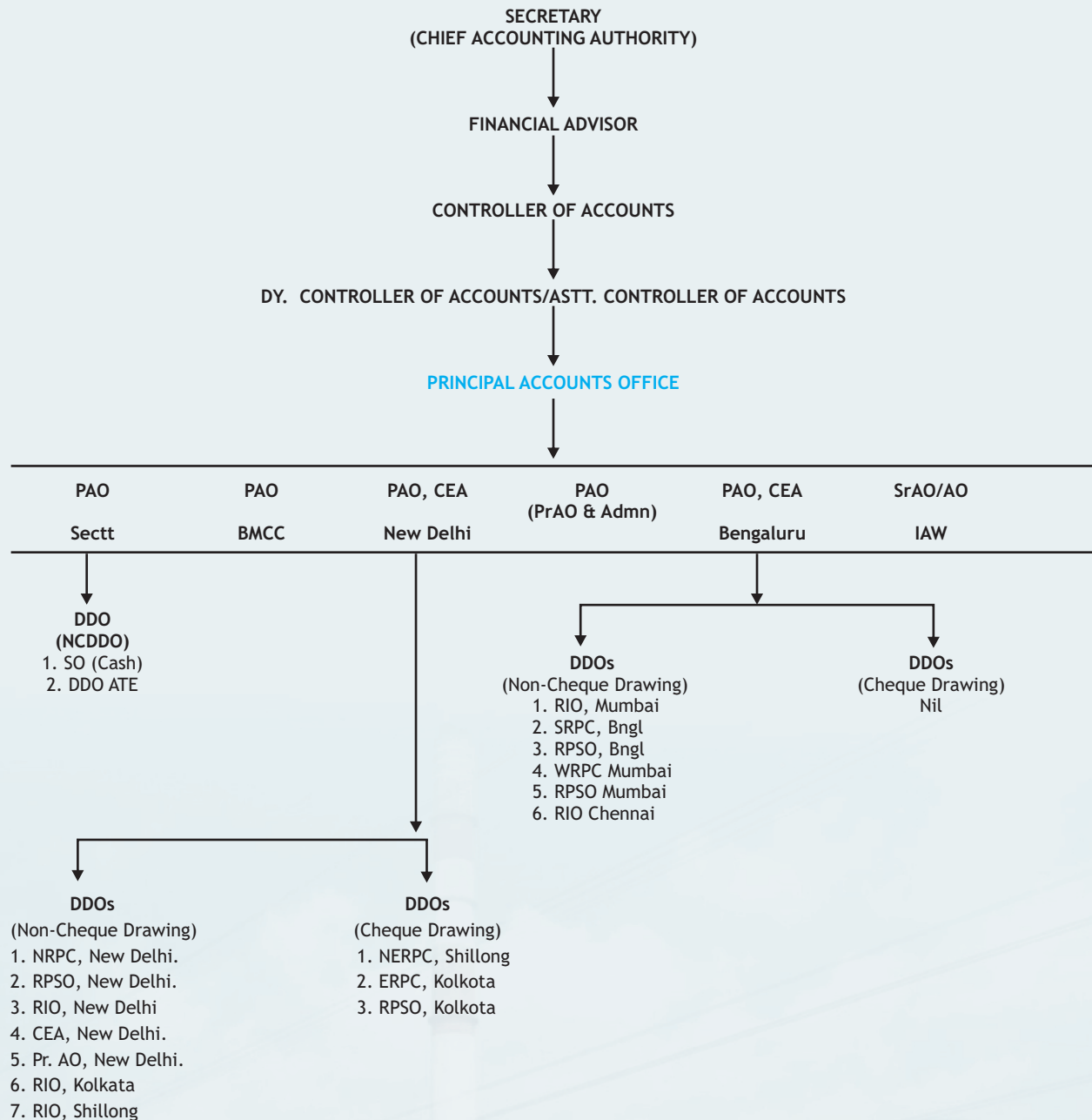
Statements of Receipts and Expenditure

In accordance with the format prescribed by O/o C.G.A, Ministry of Finance; following nine monthly statements of Receipts and Expenditure are put on the website of Ministry of Power (Powermin.nic.in Controller of Accounts)

- (i) Statement of Receipt and Expenditure.
- (ii) Statement of Expenditure (Grant wise Major Head wise)
- (iii) Statement of Receipts
- (iv) Statement of Object Head wise expenditure.
- (v) Statement of Expenditure as per Detailed Demands of Grants.
- (vi) Statement of Scheme wise Plan & Non Plan Expenditure.
- (vii) Statement of Release to States/Union Territories under Centrally Sponsored Schemes/States Plans.
- (viii) Statement of Transfers to PSUs, Autonomous Bodies etc.
- (ix) Statement of State wise Advices/Sanctions for releases to Grants-in-aid.

Chart 2.1

STRUCTURE OF ACCOUNTING ORGANISATION



Abbreviations Used:-

- | | |
|--|--|
| 1. CEA -Central Electricity Authority | 8. NRPC -North Regional Power Committee |
| 2. RIO -Regional Inspectorial Organization | 9. NERPC -North Eastern Regional Power Committee |
| 3. ATE -Appellate Tribunal for Electricity | 10. BMCC -Badarpur Management Contract Cell |
| 4. SRPC -Southern Regional Power Committee | 11. IAW -Internal Audit Wing |
| 5. RPSO -Regional Power Survey Office | |
| 6. WRPC -Western Regional Power Committee | |
| 7. ERPC -Eastern Regional Power Committee | |

Chart 2.2

FLOW OF ACCOUNTING INFORMATION

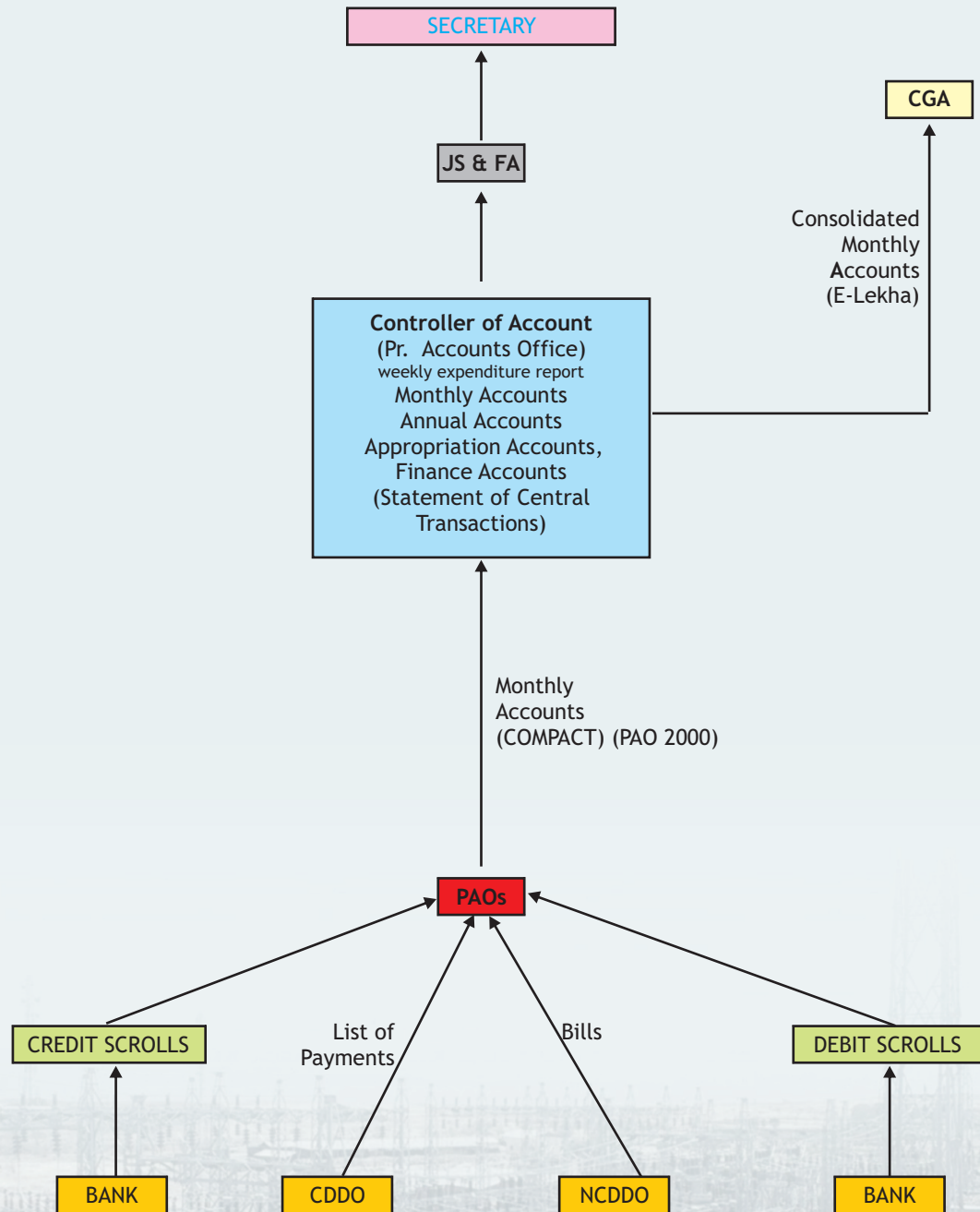


Chart 2.3

HIGHLIGHT OF ACCOUNTS

Govt. Accounts are kept in three parts, viz. Consolidated Fund, Contingency Fund and Public Account. The following is a pictorial representation of the Government Accounts:-

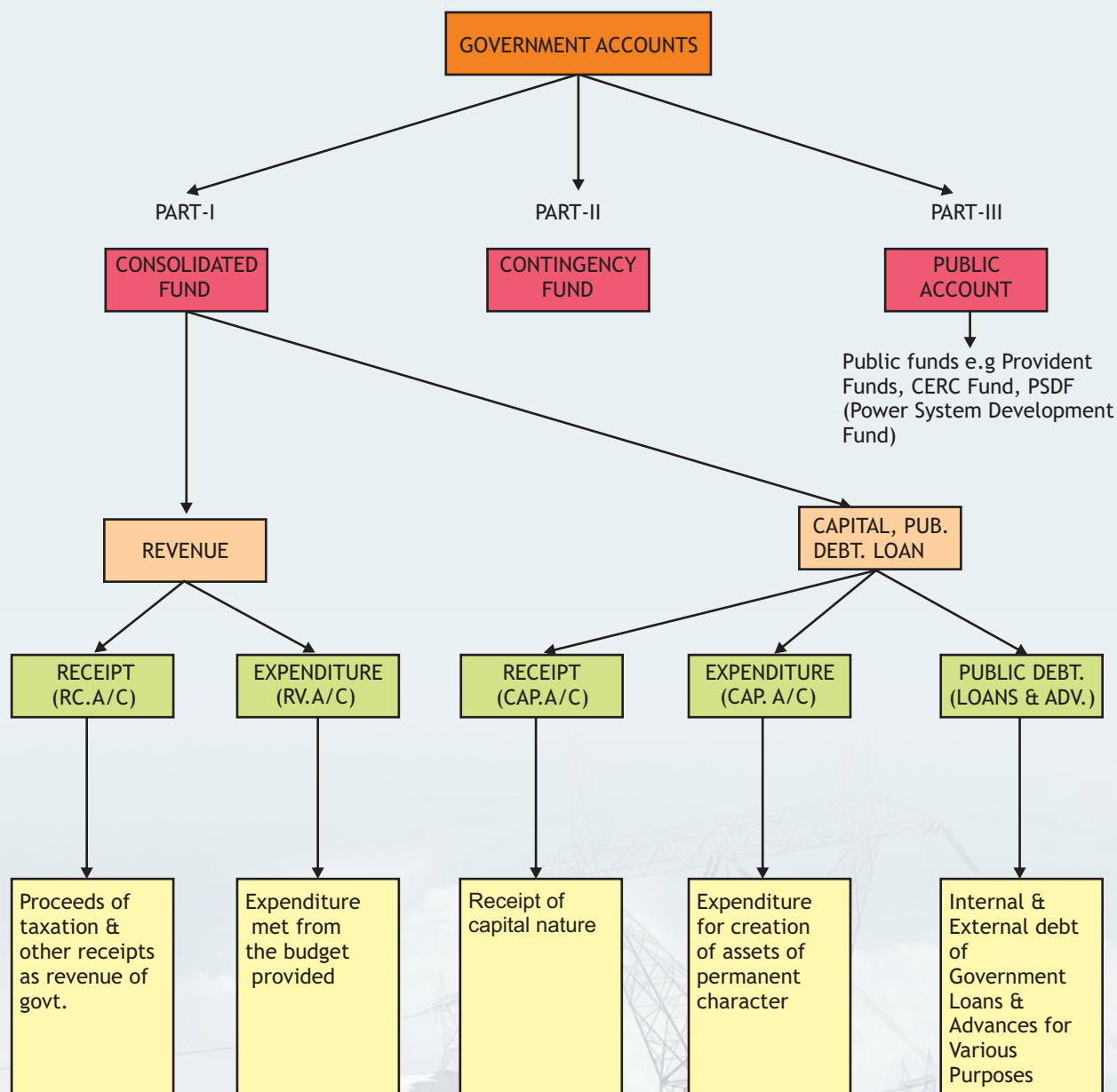


Chart 2.4

ACCOUNTING OPERATIONS - AN OVERVIEW

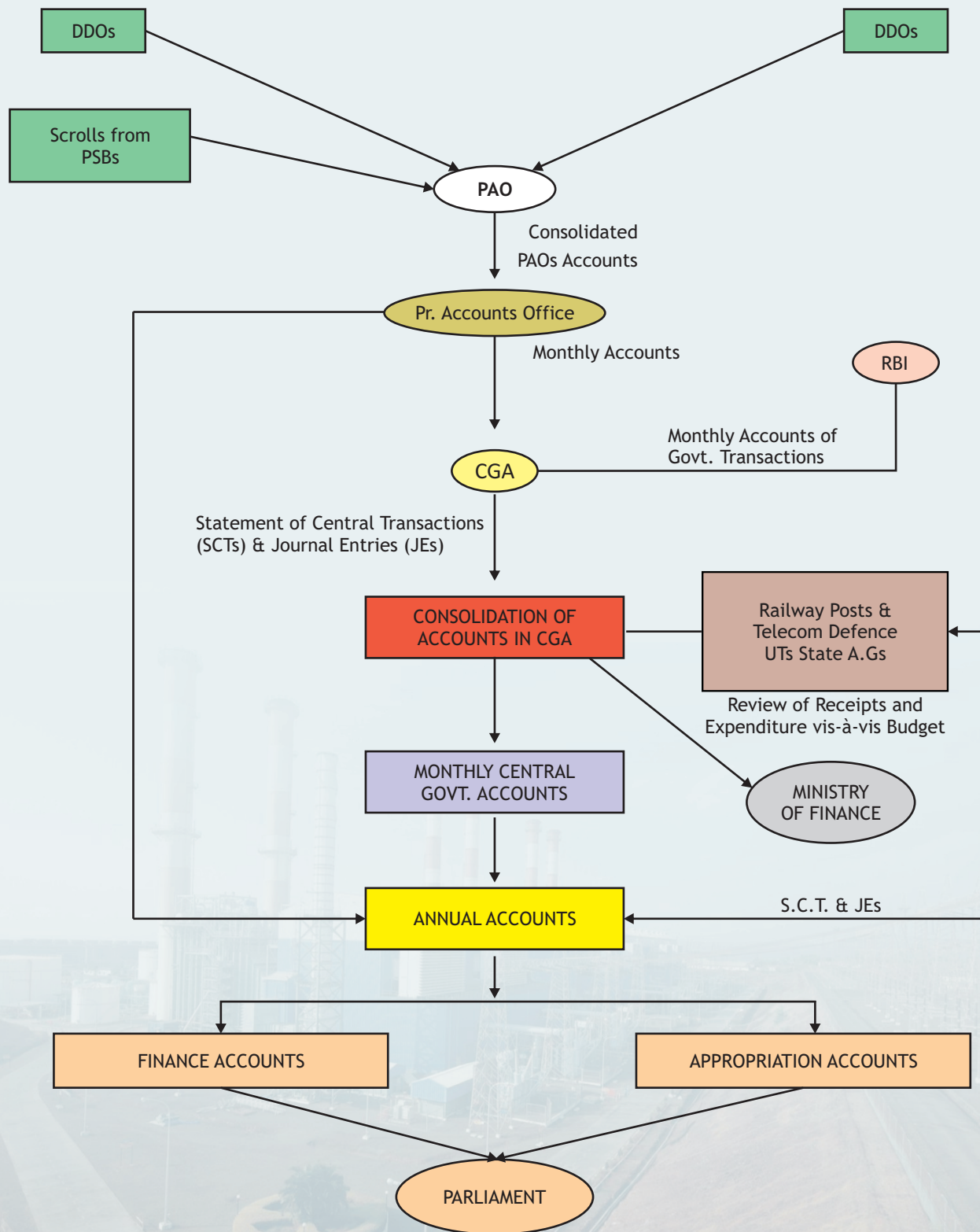
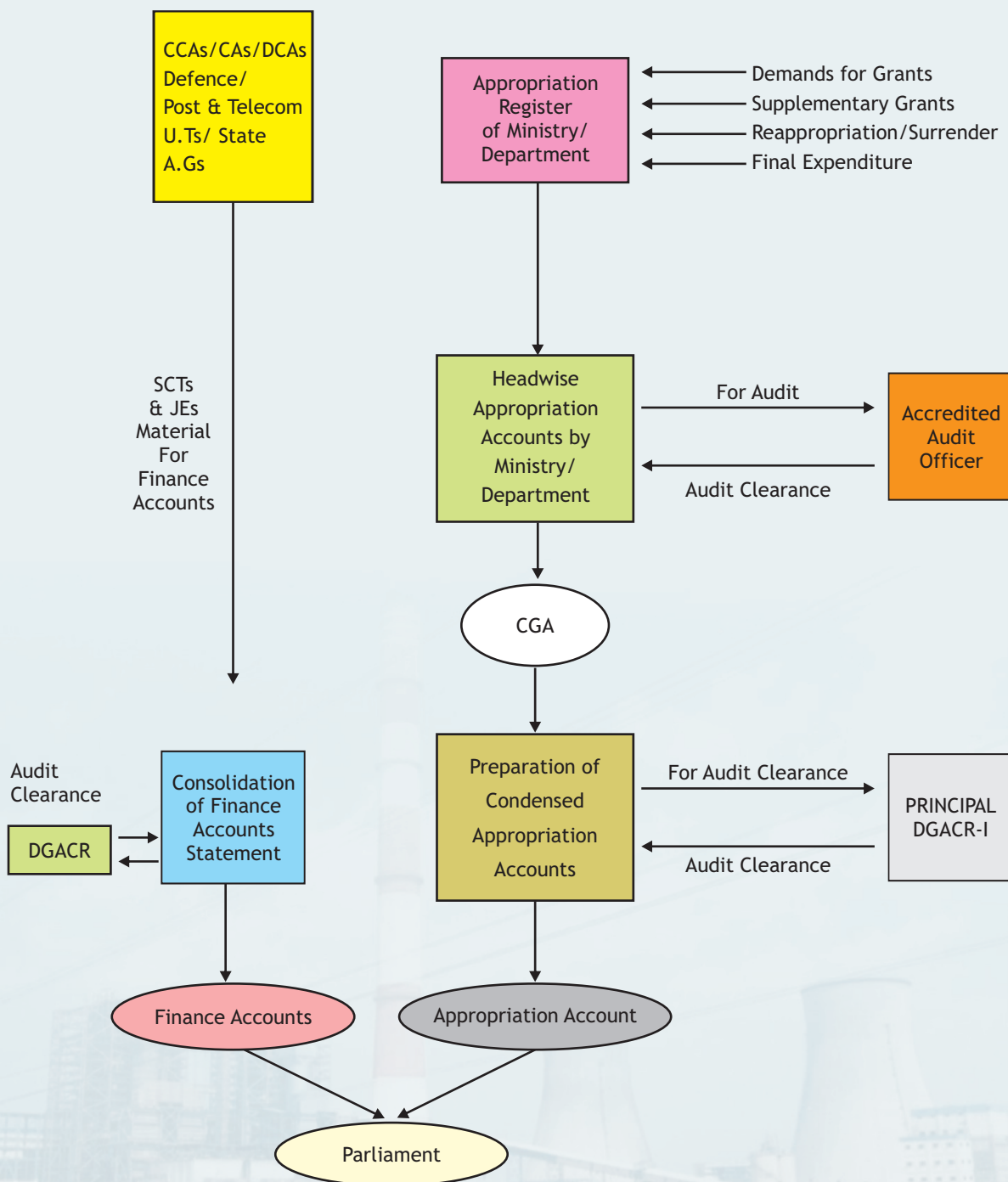


Chart 2.5

PREPARATION OF ANNUAL ACCOUNTS OF THE GOVERNMENT OF INDIA



CHAPTER-3

ACCOUNTS HIGHLIGHTS MINISTRY OF POWER FINANCIAL YEAR 2013-2014

(In Crore of ₹)

S. No.	ITEMS	Budget Estimates BE	Final Estimates FE	Actual	Variation with BE (%)	Variation with FE (%)
1.	RECEIPTS					
	REVENUE RECEIPTS					
	(i)+(ii)	8236.02	7281.64	7539.47	-8.46	3.54
	(i) TAX REVENUE	---	---	6.83	---	---
	(ii) NON-TAX REVENUE	8236.02	7281.64	7532.64	-8.54	3.45
2.	CAPITAL RECEIPTS					
	(Recoveries of loans)	705.82	40.69	23.56	-96.66	-42.10
	TOTAL RECEIPTS (1+2)	8941.84	7322.33	7563.03	-15.42	3.29
3.	EXPENDITURE					
	NON-PLAN EXPENDITURE					
	(i)+(ii)	739.65	713.19	707.41	-4.36	-0.81
	(i) ON REVENUE ACCOUNT	739.05	712.84	707.23	-4.31	-0.79
	(ii) ON CAPITAL ACCOUNT	0.60	0.35	0.18	-70.00	-48.57
4.	PLAN EXPENDITURE					
	(i)+(ii)	10116.00	5474.00	4893.15	-51.63	-10.61
	(i) ON REVENUE ACCOUNT	7337.95	3539.42	3054.15	-58.38	-13.71
	(ii) ON CAPITAL ACCOUNT	2778.05	1934.58	1839.00	-33.80	-4.94
	TOTAL EXPENDITURE	10855.65	6187.19	5600.56	-48.41	-9.48
5.	TOTAL EXPENDITURE (3+4)	10855.65	6187.19	5600.56	-48.41	-9.48
	(i) REVENUE EXPENDITURE	8077.00	4252.26	3761.38	-53.43	-11.45
	(ii) CAPITAL EXPENDITURE	2778.65	1934.93	1839.18	-33.81	-4.95

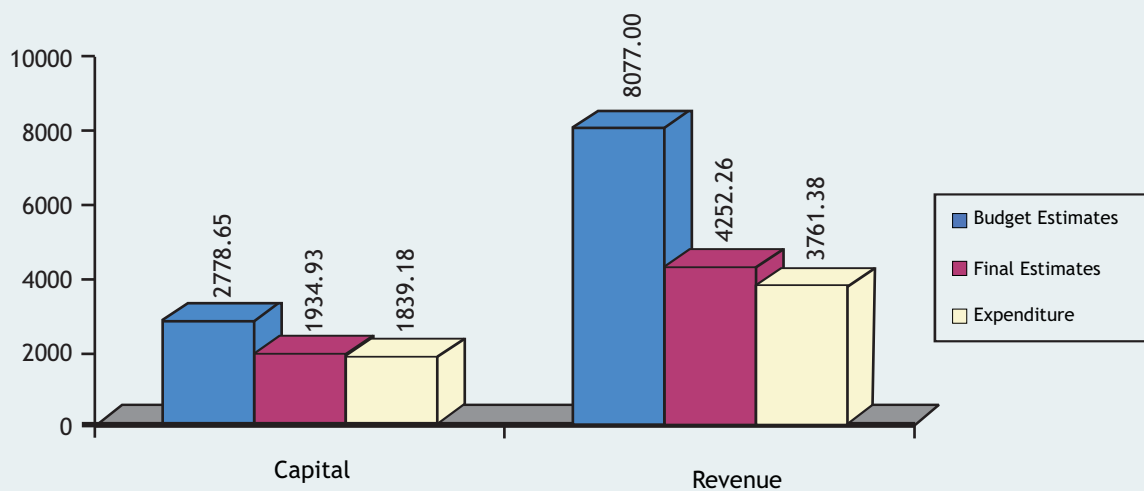
Source: SCT and Appropriation Accounts

(-) SAVING
(+) EXCESS

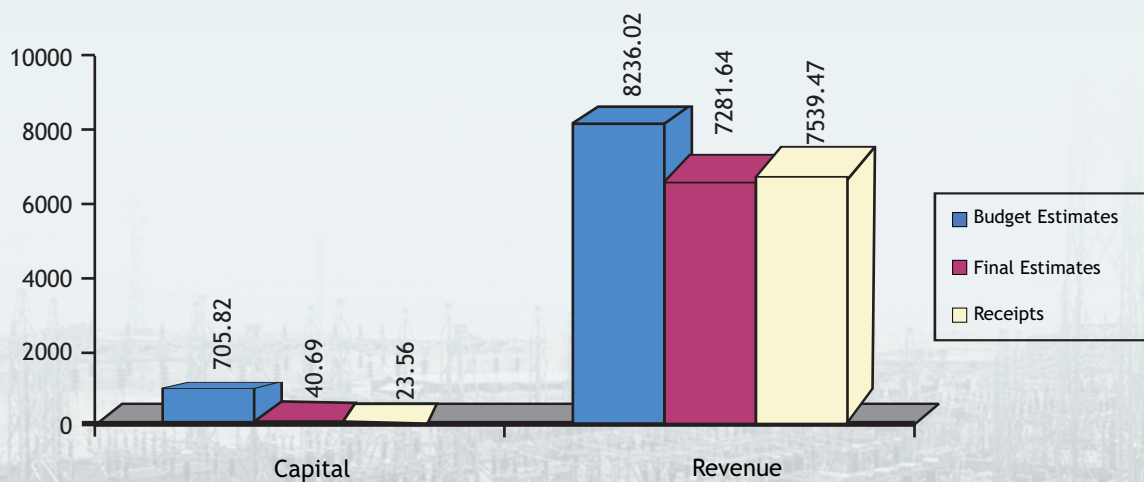
REVENUE & CAPITAL ACCOUNT FINANCIAL YEAR 2013-2014

(In Crore of ₹)

EXPENDITURE



RECEIPTS



**DETAILS OF ACCOUNTS HIGHLIGHTS
FINANCIAL YEAR 2013-2014**

(In Crore of ₹)

S. No.	ITEMS	Budget Estimates	Final Estimates	Actual
1.	RECEIPTS			
	REVENUE RECEIPTS			
	(A) TAX REVENUE			
	(i) 0021- Tax on Income other than Corp. Tax.	---	---	6.65
	0044- Service Tax	---	---	0.81
	(i) Total - (A)	---	---	6.83
	(B) NON-TAX REVENUE			
	(i) 0049-Interest Receipts	0.40	0.63	230.62
	(ii) 0050- Dividends & Profits	7917.56	6959.03	6967.02
	(iii) 0070- Other Administrative Services	0.00	0.00	0.00
	(iv) 0071- Contribution & Recoveries towards Pension & other Retirement Benefits	0.00	0.00	0.25
	(v) 0075- Miscellaneous General Services	71.33	75.25	73.64
	(vi) 0210- Medical & Public Health	0.00	0.00	0.34
	(vii) 0216- Housing	0.00	0.00	0.22
	(viii) 0235-Social Security and Welfare	0.00	0.00	0.00
	(ix) 0801- Power	246.73	246.73	260.55
	Total - (B)	8236.02	7281.64	7532.64
	Total Revenue Receipts (A) +(B)	8236.02	7281.64	7539.47
2.	CAPITAL RECEIPTS			
	(I) 6801- Repayment of Loans from PSUs	685.00	20.00	22.23
	Repayment of Loans from SEBs	20.00	20.00	0.69
	(ii) 7601- Repayment of Loans from State Govts.	---	---	---
	(iii) 7610- Repayment of Loans to Govt. Servants	0.82	0.69	0.64
	Total Capital Receipts (2)	705.82	40.69	23.56
	TOTAL RECEIPTS (1+2)	8941.84	7322.33	7563.03

Contd. on next page

Contd. from previous page

DETAILS OF ACCOUNTS HIGHLIGHTS FINANCIAL YEAR 2013-2014

(In Crore of ₹)

S. No.	ITEMS	Budget Estimates	Final Estimates	Actual
3.	EXPENDITURE			
	NON-PLAN EXPENDITURE			
	(A) ON REVENUE ACCOUNT			
	(i) 2049- Interest Payment	7.36	7.34	7.17
	(ii) 2071- Pension & Other Retirement Benefits	23.76	17.76	17.54
	(iii) 2075- Misc. General Services	---	---	---
	(iv) 2235- Social Security & Welfare	0.03	0.05	0.01
	(v) 2801- Power	680.16	662.39	657.23
	(vi) 3451- Secretariat - Economic Services	27.74	25.30	25.28
	Total- (A)	739.05	712.84	707.23
	(B) ON CAPITAL ACCOUNT			
	(i) 7602- Loans and advances to Union Territory	---	---	---
	(ii) 7610- Loans to Govt. Servants	0.60	0.35	0.18
	Total - (B)	0.60	0.35	0.18
4.	Total Non-Plan Expenditure (A) + (B)	739.65	713.19	707.41
	PLAN EXPENDITURE			
	(A) ON REVENUE ACCOUNT			
	(i) 2552-North Eastern Areas	459.70	332.50	---
	(ii) 2801- Power	6877.50	3206.17	3053.40
	(iii) 3451- Secretariat	0.75	0.75	0.75
	(iv) 3601- Grants-in-aid to State Govts.	---	---	---
	Total - (A)	7337.95	3539.42	3054.15
	(B) ON CAPITAL ACCOUNT			
	(i) 4552- Capital Outlay on North Eastern Areas	398.34	62.34	61.97
	(ii) 4801- Capital Outlay on Power Projects	835.22	570.57	460.36
	(iii) 6552- Loans for North Eastern Areas	106.16	106.16	---
	(iv) 6801- Loans for Power Projects	1438.33	1195.51	1316.67
	Total - (B)	2778.05	1934.58	1839.00
	Total Plan Expenditure (A)+(B)	10116.00	5474.00	4893.15
	(i) Revenue Expenditure	8077.00	4252.26	3761.38
	(ii) Capital Expenditure	2778.65	1934.93	1839.18
	TOTAL	10855.65	6187.19	5600.56

Source: Appropriation Accounts & SCT

FUND FLOW STATEMENT
MINISTRY OF POWER FINANCIAL YEAR 2013-2014

(In Crore of ₹)

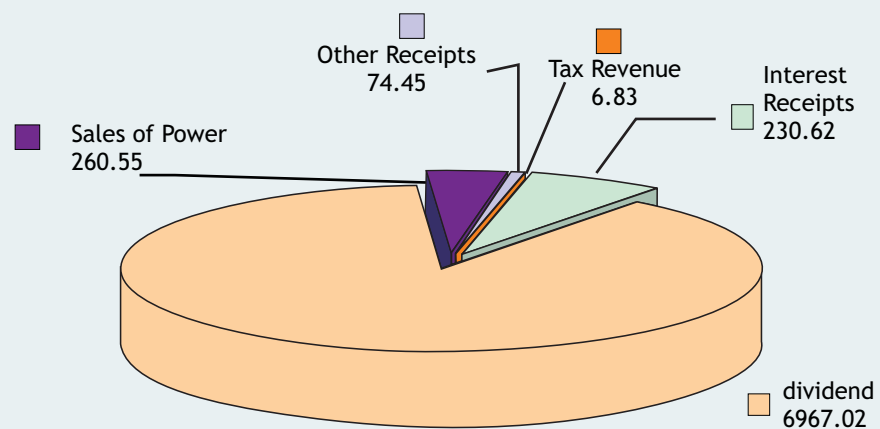
RECEIPTS	AMOUNT	DISBURSEMENT	AMOUNT
CONSOLIDATED FUND OF INDIA		CONSOLIDATED FUND OF INDIA	
A . REVENUE RECEIPTS		REVENUE EXPENDITURE	
1. Tax Revenue	6.83	General Services	24.71
2. Non-Tax Revenue	7532.64	Social Services	0.01
(i) Interest Receipts	230.62	Economic Services	3736.66
(ii) Other Receipts	7302.02	Grants-in-aid	---
Total Revenue Receipts (A)	7539.47	Total Revenue Expenditure	3761.38
B. CAPITAL RECEIPTS		CAPITAL EXPENDITURE	
Loan Recoveries	23.56	General Services	---
		Social Services	---
		Economic Services	522.33
		Loans & Advances	1316.85
Total Capital Receipts (B)	23.56	Total Capital Expenditure	1839.18
Total Consolidated Fund of India (A+B)	7563.03	Total Consolidated Fund (A+B)	5600.56
PUBLIC ACCOUNTS		PUBLIC ACCOUNTS	
Provident Fund	28.54	Provident Fund	25.10
Other Accounts	0.10	Other Accounts	0.59
Deposits & Advances	1788.33	Deposits & Advances	880.93
Remittances	---	Remittances	2.18
Reserve Funds	74.00	Reserve Funds	31.70
Suspense & Miscellaneous	6513.36	Suspense & Miscellaneous	9768.89
Susp. & Misc (Balancing Figure Authorization of Funds etc)	342.59		
TOTAL (PUBLIC ACCOUNTS)	8746.92	TOTAL (PUBLIC ACCOUNTS)	10709.39
TOTAL RECEIPTS	16309.95	TOTAL DISBURSEMENTS	16309.95

Source: Appropriation and SCT

REVENUE & CAPITAL RECEIPTS FINANCIAL YEAR 2013-2014

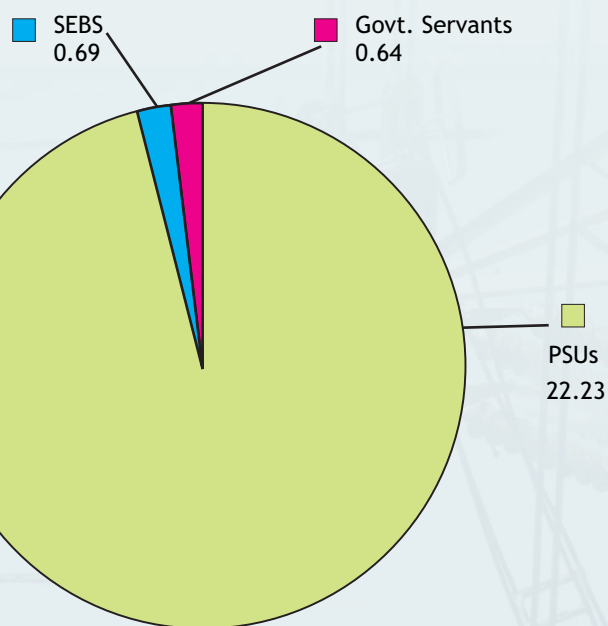
(In Crore of ₹)

REVENUE RECEIPTS



TOTAL REVENUE RECEIPTS = ₹ 7539.47

CAPITAL RECEIPTS

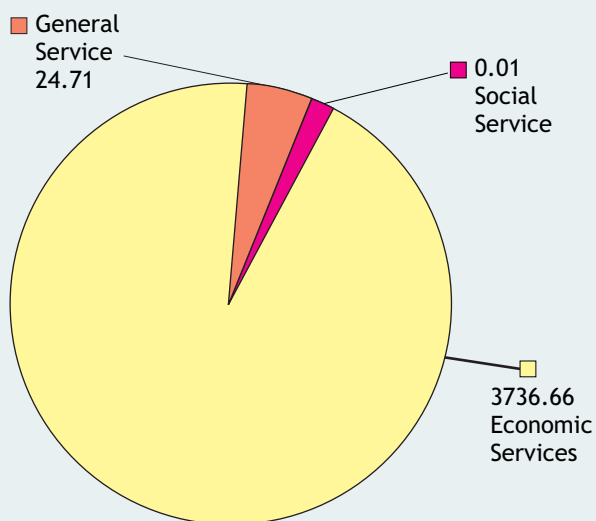


TOTAL CAPITAL RECEIPTS = ₹ 23.56

REVENUE & CAPITAL DISBURSEMENT (Consolidated Fund of India) FINANCIAL YEAR 2013-2014

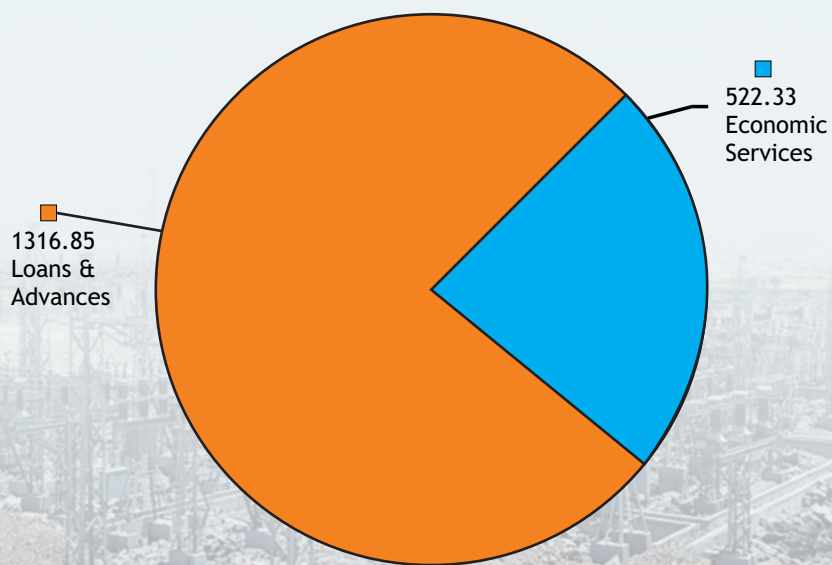
(In Crore of ₹)

REVENUE EXPENDITURE



TOTAL= ₹ 3761.38

CAPITAL EXPENDITURE



TOTAL= ₹ 1839.18

CHAPTER-4

RECEIPTS ANALYSIS MINISTRY OF POWER FINANCIAL YEAR 2013-2014

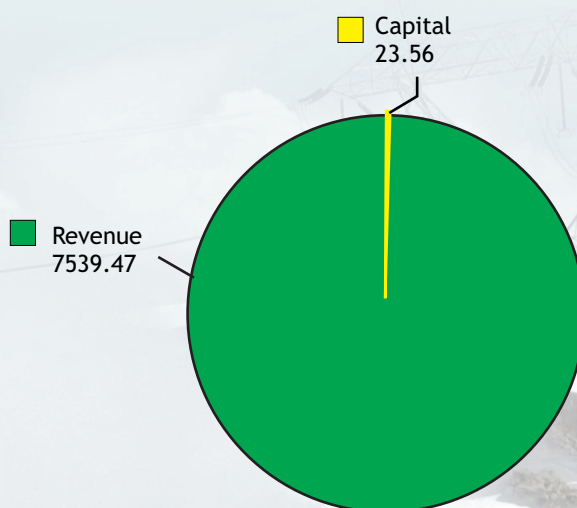
(In Crore of ₹)

S. No.	ITEMS	AMOUNT
1	Tax Revenue	6.83
2	Non-Tax Revenue	7532.64
3	TOTAL REVENUE RECEIPTS (1+2)	7539.47
4	Loan Recoveries from PSUs	22.23
5	Loan Recoveries from SEBs	0.69
6	Loan Recoveries from State Govts.	---
7	Repayment from Govt. Servants	0.64
8	Miscellaneous loans	---
9	TOTAL CAPITAL RECEIPTS (4+5+6+7+8)	23.56
10	TOTAL RECEIPTS (3+9)	7563.03

Source: SCT

MINISTRY OF POWER (RECEIPTS) FINANCIAL YEAR 2013-2014

(In Crore of ₹)



Source: SCT

ANALYSIS OF RECEIPTS FOR MINISTRY OF POWER FINANCIAL YEAR 2013-2014

The total receipts of the Ministry of Power in the Consolidated Fund of India during the year 2013-2014 amounted to ₹ 7563.03 crores. The figures consist of ₹ 7539.47 crores from the Revenue Account and ₹ 23.56 crores from Loans and Advances (Capital Accounts).

The total receipts comprise of ₹ 6.83 crores gross tax revenue and ₹ 7532.64 crores gross Non-tax Revenue & Capital Receipts of ₹ 23.56 crores. The major contribution towards Revenue/Capital Receipts was under the following items:

(In Crore of ₹)

S. No.	Major Head of Account	Amount
(a)	0021 - Tax on Income other than Corporation Tax	6.65
(b)	0044 - Service Tax	0.18
(c)	0049 - Interest Receipts	230.62
(d)	0050 - Dividend and Profits	6967.02
(e)	0070—Other Administrative Services	---
(f)	0071 - Contribution & Recoveries towards Pension & other Retirement Benefits	0.25
(g)	0075 - Miscellaneous General Services	73.64
(h)	0210 - Medical and Public Health	0.34
(i)	0216 - Housing	0.22
(j)	0801 - Power	260.55
(k)	6801 - Loans for Power Projects	22.92
(l)	7601 - Loans & Advances to State Governments	---
(m)	7610 - Loans to Government Servants etc.	0.64
	TOTAL	7563.03

Source: SCT

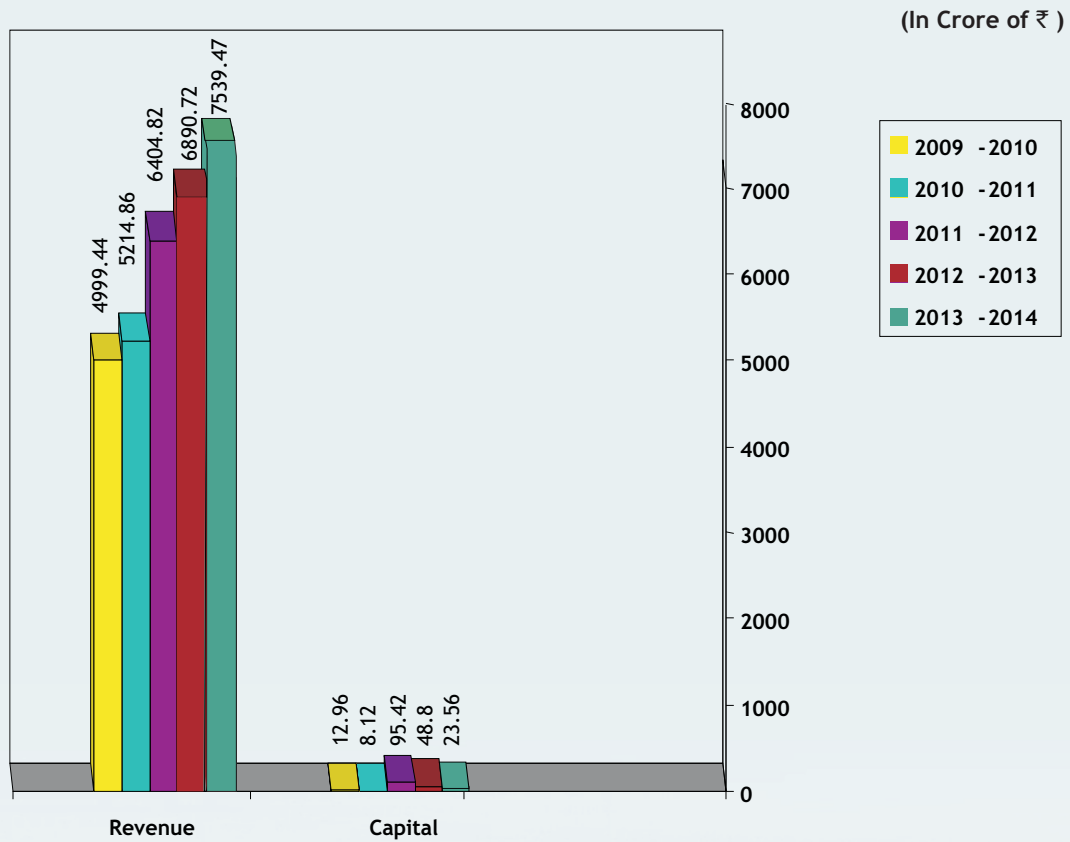
TREND OF TOTAL RECEIPTS (CONSOLIDATED FUND OF INDIA)

(In Crore of ₹)

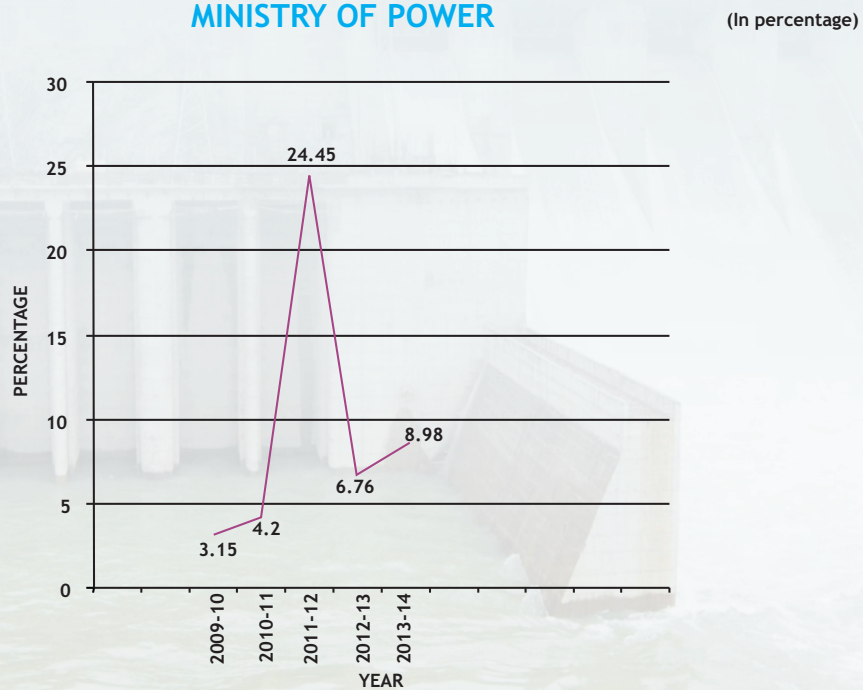
	2009-2010	2010-2011	2011-2012	2012-2013	2013-2014
REVENUE RECEIPTS					
TAX REVENUE	8.60	4.97	6.36	6.23	6.83
NON TAX REVENUE	4990.84	5209.89	6398.46	6884.49	7532.64
Interest Receipts	35.70	9.62	42.47	478.22	230.62
Dividend Profit	4512.34	5026.46	5916.12	6083.16	6967.02
Other Receipts	77.25	1.41	1.14	45.76	74.45
Sale of Power	365.55	172.40	438.73	277.35	260.55
Total	4999.44	5214.86	6404.82	6890.72	7539.47
%age INCREASE OVER PREVIOUS YEAR	3.63	4.31	22.82	7.59	9.41
CAPITAL RECEIPTS					
PUBLIC SECTOR UNDERTAKINGS	3.06	---	18.15	25.70	22.23
STATE ELECTRICITY BOARDS	0.06	---	---	22.33	0.69
STATE GOVERNMENTS	8.85	7.16	76.51	---	---
GOVERNMENT SERVANTS	0.99	0.96	0.76	0.77	0.64
TOTAL	12.96	8.12	95.42	48.80	23.56
%age INCREASE/DECREASE OVER PREVIOUS YEAR	-62.81	-37.35	1075.12	-48.86	-51.72
GRAND TOTAL	5012.40	5222.98	6500.24	6939.52	7563.03
OVERALL % AGE INCREASE	3.15	4.20	24.45	6.76	8.98

Source: SCT

TREND OF TOTAL RECEIPTS MINISTRY OF POWER



TREND OF INCREASE IN TOTAL RECEIPTS MINISTRY OF POWER



MONTHLY RECEIPT TREND
Monthly receipt trend of Ministry of Power for the last three years

(Amount in thousand)

Month	2011-12				2012-13				2013-14			
	Dividend	Guarantee Fee	Sale of Power	Total	Dividend	Guarantee Fee	Sale of Power	Total	Dividend	Guarantee Fee	Sale of Power	Total
April	899789	1250	1000000	1901039	Nil	442411	Nil	442411	Nil	700000		700000
May	Nil		Nil	0	Nil	Nil	Nil	Nil	Nil	Nil		0
June	Nil		Nil	0	Nil	Nil	Nil	Nil	Nil	Nil		0
July	Nil		Nil	0	Nil	Nil	Nil	Nil	Nil	Nil		0
August	Nil		423515	423515	Nil	Nil	Nil	Nil	Nil	Nil		0
September	16721307		Nil	16721307	6426823	Nil	Nil	6426823	22291575	Nil		22291575
October	2387398		1383449	3770847	10058438	Nil	1303317	11361755	4998504	6174	1223186	6227864
November	3890943		Nil	3890943	5603750	Nil	Nil	5603750	Nil	Nil		0
December	Nil		Nil	0	Nil	Nil	Nil	Nil	Nil	Nil		0
January	222500		Nil	222500	Nil	Nil	Nil	Nil	840	956		1796
February	35039311		Nil	35039311	Nil	Nil	Nil	Nil	38411291	Nil		38411291
March	Nil	550	1343383	1343933	38742621	7835	1263252	40013708	3968008	Nil	1183120	5151128
TOTAL	59161248	1800	4150347	63313395	60831632	450246	2566569	63848447	69670218	707130	2406306	72783654

SUMMARY OF MONTHLY RECEIPT TREND

Summary of Monthly Receipt Trend of Ministry of Power for the last three years

(In Crore of ₹)

Month	2011-12	2012-13	2013-14
	Amount	Amount	Amount
April	190.10	44.24	70.00
May	Nil	Nil	Nil
June	Nil	Nil	Nil
July	Nil	Nil	Nil
August	42.35	Nil	Nil
September	1672.13	642.68	2229.16
October	377.09	1136.18	622.79
November	389.09	560.38	Nil
December	Nil	Nil	Nil
January	22.25	Nil	0.18
February	3503.93	Nil	3841.13
March	134.39	4001.37	515.11
TOTAL	6331.34	6384.84	7278.36



CHAPTER-5

EXPENDITURE ANALYSIS BUDGET AND EXPENDITURE MINISTRY OF POWER GRANT NO.76 (-) Saving

(In Crore of ₹)

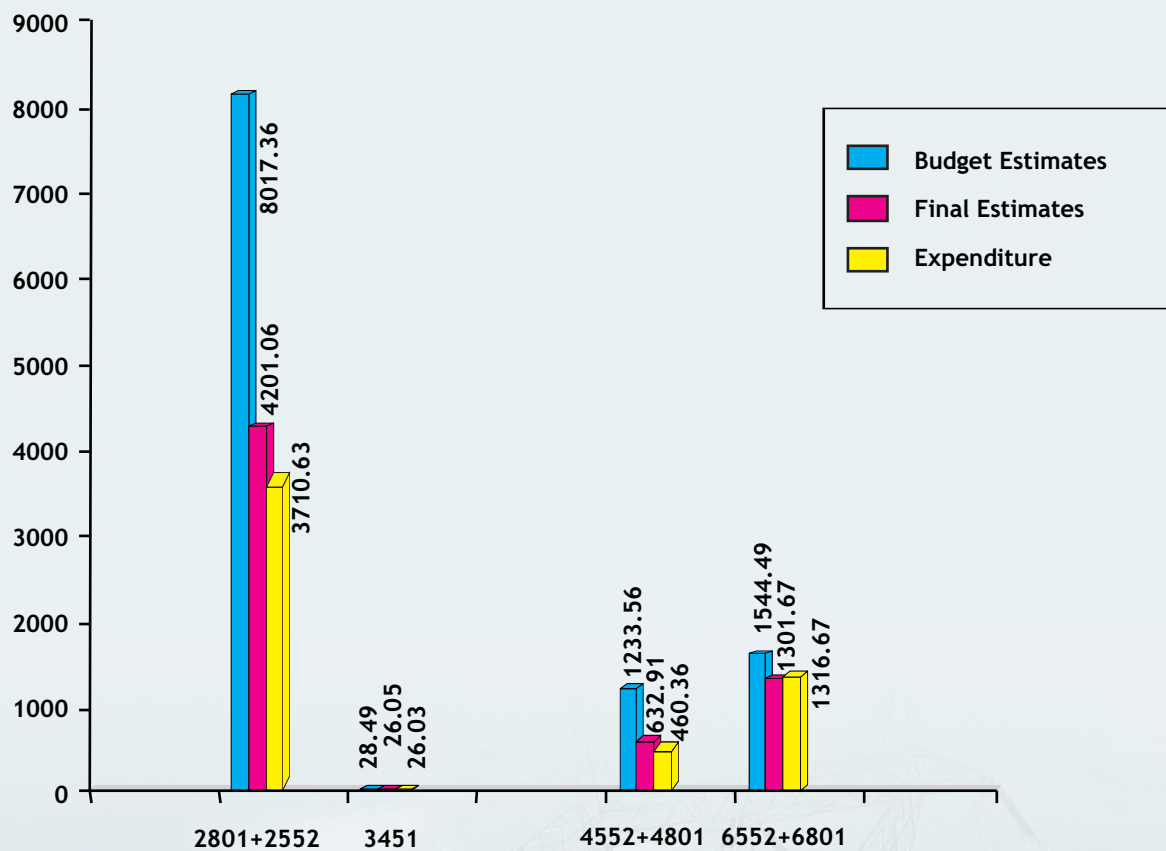
	Budget estimates	Final estimates	Actual	Variations with BE (%)	Variations with FE (%)
GROSS	10823.90	6161.69	5513.69	-49.06	-10.52
RECOVERIES	510.20	510.20	340.78	-33.21	-33.21
NET	10313.70	5651.49	5172.91	-49.84	-8.47

MAJOR HEAD OF ACCOUNT	Budget Estimates			Final Estimates			Expenditure		
	Plan	Non-Plan	Total	Plan	Non-Plan	Total	Plan	Non-Plan	Total
REVENUE SECTION									
2801+2552	7337.20	680.16	8017.36	3538.67	662.39	4201.06	3053.40	657.23	3710.63
3451	0.75	27.74	28.49	0.75	25.30	26.05	0.75	25.28	26.03
3601	---	---	---	---	---	---	---	---	---
Total Revenue Section	7337.95	707.90	8045.85	3539.42	687.69	4227.11	3054.15	682.51	3736.66
CAPITAL SECTION									
4552	398.34	---	398.34	62.34	---	62.34	---	---	---
4801	835.22	---	835.22	570.57	---	570.57	460.36	---	460.36
6552	106.16	---	106.16	106.16	---	106.16	---	---	---
6801	1438.33	---	1438.33	1195.51	---	1195.51	1216.67	---	1316.67
Total Capital Section	2778.05	---	2778.05	1934.58	---	1934.58	1777.03	---	1777.03
GRAND TOTAL	10116.00	707.90	10823.90	5474.00	687.69	6161.69	4831.18	682.51	5513.69

(Source Appropriation A/cs)

**BUDGET V/S EXPENDITURE GRANT NO.76
(Major Head-wise)
FINANCIAL YEAR 2013-2014**

(In Crore of ₹)



2801 : Power

3451 : Secretariat - Economic Services

3601 : Grants-in-aid to State Govts.

4552 : Capital Outlay on North East

4801 : Capital Outlay on Power Projects

6552 : Loans for North Eastern Projects

6801 : Loans for Power Projects

Expenditure Statement North Eastern Region for the year 2013-14

(In Crore of ₹)

S. No.	Scheme	BE	RE	Expenditure
		2013-14	2013-14	
Revenue				
	RGGVY (North Eastern Region)	458.70	269.15	72.02
Capital				
	NEEPCO (Investment)	398.34	62.34	62.34
	NEEPCO (Loan)	48.66	48.66	48.66
	Loans to PFC for RAPDRP (NER)	57.50	57.50	57.50
	Grand Total	963.20	437.65	240.52

GRANT-WISE MONTHLY FLOW OF EXPENDITURE FINANCIAL YEAR 2013-2014

(In Crore of ₹)

Grant No.	APR	MAY	JUNE	JULY	AUG	SEP	OCT	NOV	DEC	JAN	FEB	MARCH/ March (SY)	Deduction and Authorisation	Total
28	--	--	--	--	--	61.97	--	--	--	--	--	--	--	61.97
35	0	0.01	0.02	0.03	0.03	0.05	0.04	0.08	0.03	0.02	0.01	6.85	--	7.17
37	--	0.03	--	0.04	0.03	0.01	0.01	0.01	0.02	0.02	0.01	--	--	0.18
40	0.73	2.32	1.20	0.45	2.50	0.68	2.30	1.40	1.73	1.76	1.20	1.28	--	17.55
76	-45.09	448.74	1374.88	19.52	7.59	1376.98	217.10	177.60	885.57	109.94	317.86	280.41	342.59	5513.69
Total	-44.36	451.10	1376.10	20.04	10.15	1439.69	219.45	179.09	887.35	111.74	319.08	288.54	342.59	5600.56

Grant No. 28 : Capital outlay on North Eastern Areas
Grant No. 35 : Interest Payments - M/o Finance
Grant No. 37 : Loans to Govt. Servants
Grant No. 40 : Pension and other Retirement Benefits
Grant No. 76 : Power

HEADWISE, GRANT-WISE MONTHLY FLOW OF EXPENDITURE FINANCIAL YEAR 2013-2014

(In Crore of ₹)

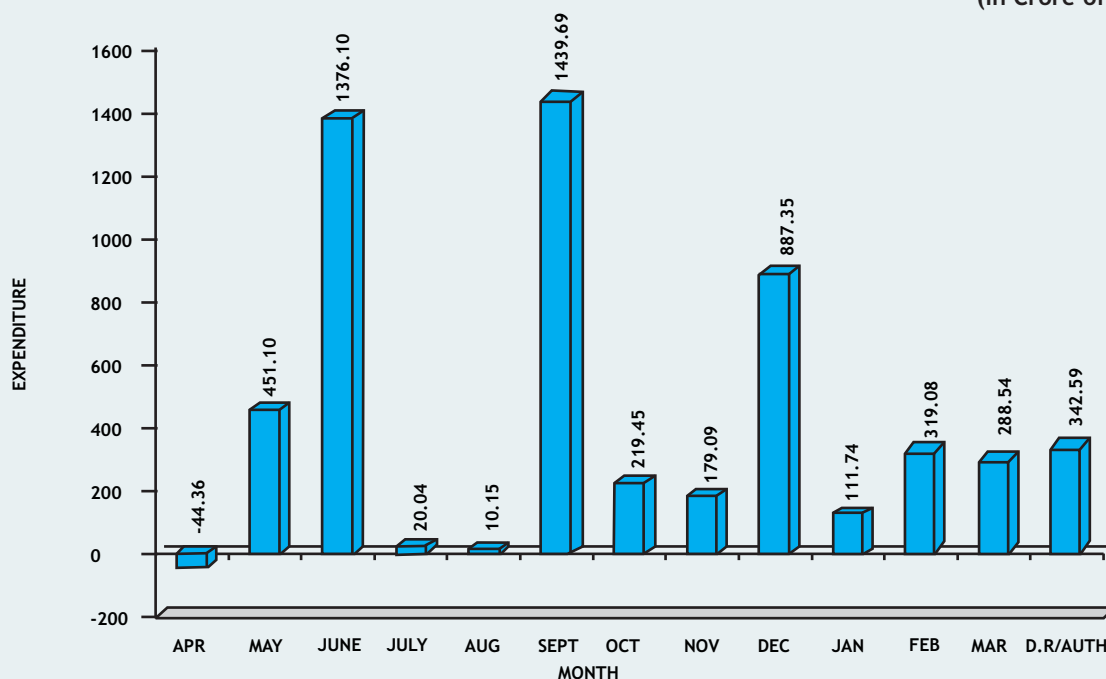
Head of A/c	Grant No.	APR	MAY	JUNE	JULY	AUG	SEP	OCT	NOV	DEC	JAN	FEB	MARCH/ March (SY)	Deductions and authorisation	Total
4552	28	--	--	--	--	--	61.97	--	--	--	--	--	--	--	61.97
2049	35	--	0.01	0.02	0.03	0.03	0.05	0.04	0.08	0.03	0.02	0.01	6.85	--	7.17
7610	37	--	0.03	--	0.04	0.03	0.01	0.01	0.01	0.02	0.02	0.01	--	--	0.18
2071	40	0.73	2.32	1.20	0.45	2.50	0.68	2.30	1.39	1.73	1.76	1.20	1.28	--	17.54
2235	40	--	--	--	--	--	--	--	0.01	--	--	--	--	--	0.01
2801	76	8.96	5.28	1103.98	6.53	5.54	1329.61	33.82	56.55	873.21	16.98	16.55	213.90	*39.72	3710.63
3451	76	3.35	2.79	2.32	1.99	2.05	2.22	2.41	2.05	2.15	1.92	1.78	0.75	**0.25	26.03
4801	76	-57.40	57.40	-11.00	11.00	--	28.00	-63.87	63.87	-31.25	31.25	107.57	22.17	***302.62	460.36
6801	76	--	383.27	279.58	--	--	17.15	244.74	55.13	41.46	59.79	191.96	43.59	---	1316.67
Total		-44.36	451.10	1376.10	20.04	10.15	1439.69	219.45	179.09	887.35	111.74	319.08	288.54	342.59	5600.56

2049 : Interest Payment
7610 : Loans & Advances
2071 : Pension & other Retirement Benefits
2075 : General Services
2235 : Social Security & Welfare
2801 : Power
3451 : Secretariat-Economic Services
4552 : Capital Outlay on North Eastern Areas
4801 : Capital Outlay on Power Projects
6801 : Loans for Power Projects

* Rs. 39.33 crores recovered from PSUs/Autonomous bodies
Rs. 0.03 crores authorized to I & B
Rs. 0.36 crores authorized to CPWD
** Rs. 0.25 crores authorized to CPWD
***Rs. 301.45 crores met from NTPC
Rs. 1.17 crores authorized to CPWD

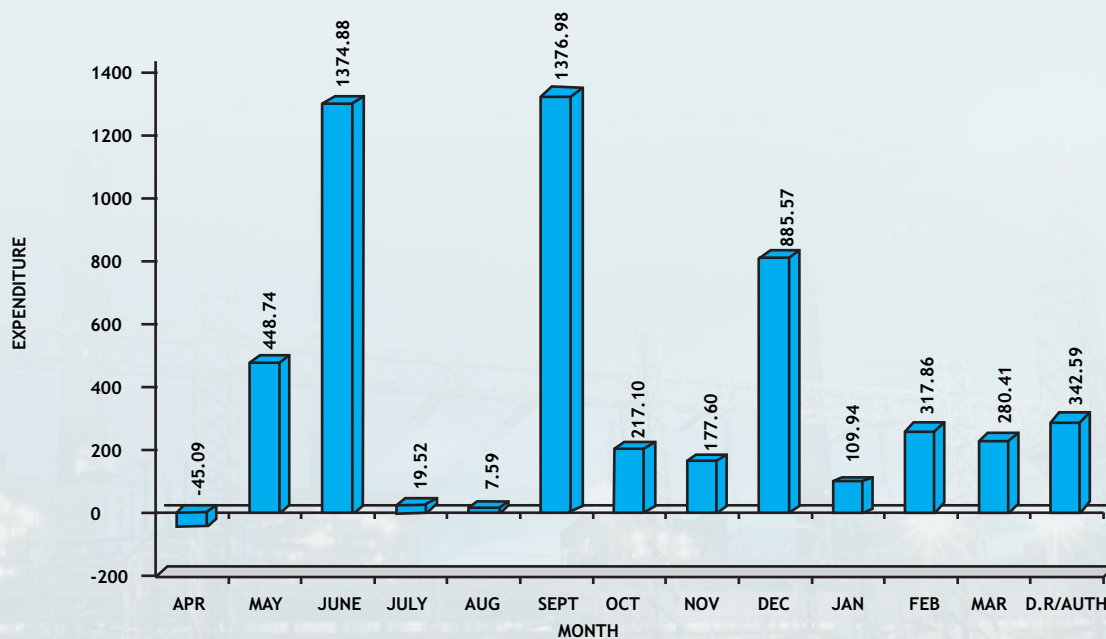
TREND OF MONTHLY FLOW OF EXPENDITURE FINANCIAL YEAR 2013-2014

(In Crore of ₹)



TREND OF MONTHLY FLOW OF EXPENDITURE IN GRANT NO. 76 FINANCIAL YEAR 2013-2014

(In Crore of ₹)



Note: ₹(-)45.09 crore in April is due to deduct recoveries met from CERC fund and receipts from NTPC before payment for acquisition of coal bearing areas.

GRANT-WISE EXPENDITURE FINANCIAL YEAR 2013-2014

(In Crore of ₹)

GRANT NO.	REVENUE	CAPITAL	TOTAL
28	0.00	61.97	61.97
35	7.17	0.00	7.17
37	0.00	0.18	0.18
40	17.55	0.00	17.55
76	3736.66	1777.03	5513.69
GRANT TOTAL	3761.38	1839.18	5600.56

ANALYSIS OF DISBURSEMENTS TOTAL BUDGET OUTLAY AND EXPENDITURE (Plan/Non-Plan/Sector-wise) Financial Year 2013-2014

(In Crore of ₹)

	BUDGET ESTIMATE	FINAL ESTIMATES	EXPENDITURE
REVENUE SECTION			
PLAN	7337.95	3539.42	3054.15
NON-PLAN	739.05	712.84	707.23
TOTAL	8077.00	4252.26	3761.38
CAPITAL SECTION			
PLAN	2778.05	1934.58	1839.00
NON-PLAN	0.60	0.35	0.18
TOTAL	2778.65	1934.93	1839.18
GRAND TOTAL	10855.65	6187.19	5600.56

SOURCE: S.C.T.

**ANALYSIS OF DISBURSEMENTS
BUDGET OUTLAY AND EXPENDITURE
Ministry of Power Grant No. 76 2013-2014**

(In Crore of ₹)

	BUDGET ESTIMATE	FINAL ESTIMATES	EXPENDITURE
REVENUE SECTION			
PLAN	7337.95	3539.42	3054.15
NON-PLAN	707.90	687.69	682.51
TOTAL	8045.85	4227.11	3736.66
CAPITAL SECTION			
PLAN	2778.05	1934.58	1777.03
NON-PLAN	---	---	---
TOTAL	2778.05	1934.58	1777.03
GRAND TOTAL	10823.90	6161.69	5513.69

SOURCE: Appropriation Accounts

Note:- There is difference between two sets of figures because SCT includes total of all the Grants whereas Appropriation accounts includes total of Grants No.76.

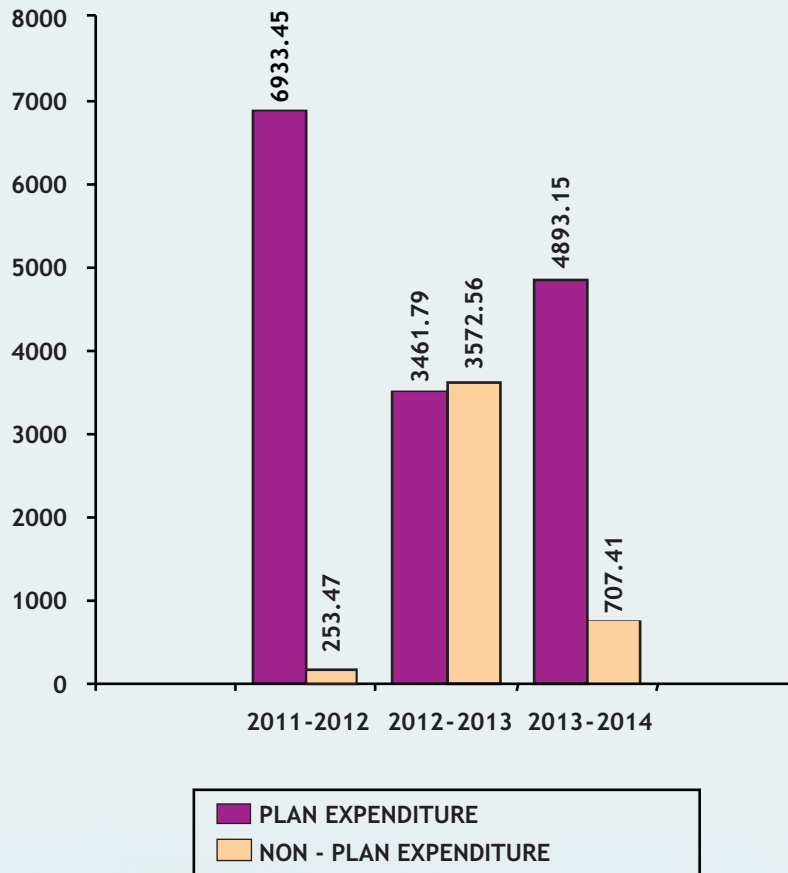
TREND OF SECTORAL ANALYSIS OF EXPENDITURE

(In Crore of ₹)

Particulars	2011-2012			2012-2013			2013-2014		
	Plan	Non Plan	Total	Plan	Non Plan	Total	Plan	Non Plan	Total
Revenue Account									
General Service	---	94.11	94.11	---	20.47	20.47	---	24.71	24.71
Social Service	---	0.02	0.02	---	---	---	---	0.01	0.01
Economic Service	4579.07	158.85	4737.92	1523.63	225.54	1749.17	3054.15	682.51	3736.66
Total (A)	4579.07	252.98	4832.05	1523.63	246.01	1769.64	3054.15	707.23	3761.38
Capital Account									
Economic Service	192.81	---	192.81	371.17	---	371.17	522.33	---	522.33
Loans & Advances	2161.57	0.49	2162.06	1566.99	3326.55	4893.54	1316.67	0.18	1316.85
Total (B)	2354.38	0.49	2354.87	1938.16	3326.55	5264.71	1839.00	0.18	1839.18
Grand Total (A+B)	6933.45	253.47	7186.92	3461.79	3572.56	7034.35	4893.15	707.41	5600.56

TREND OF PLAN & NON-PLAN EXPENDITURE MINISTRY OF POWER

(In Crore of ₹)



**APPROPRIATION ACCOUNTS
FOR THE YEAR 2013-2014
GRANT NO.76- MINISTRY OF POWER**

(In thousand of ₹)

REVENUE:		Total Grant OR Appropriation	Actual Expenditure	Saving – Excess +
Voted				
Original	8045,85,00	8045,87,00	37,36,65,44	-4309,21,56
Supplementary	2,00			
Amount Surrendered during the year within Grant				
R	4308,97.90	4308,97,90	---	-4308,97,90
Capital				
Voted				
Original	2778,05,00	2918,05,00	1777,03,28	-1141,01,72
Supplementary	140,00.00			
Amount surrender during the year				
R	1141,01,72	1141,01,72	---	-1141,01,72

Source:- Appropriation Accounts

**MAJOR HEADWISE APPROPRIATION ACCOUNTS
FOR THE YEAR 2013-2014
Ministry of Power**

(In thousand of ₹)

Major Head	Total Grant OR Appropriation	Actual Expenditure	Saving – Excess +
Revenue Section			
Major Head '2552'			
O. 459,70,00	---	---	---
S. 1,00			
R. -459,71,00			
Major Head '2801'			
voted			
O. 7557,66,00			
S. 1,00			
R. -3846,80,62	3710,86,38	3710,62,93	-23,45
Major Head '3451'			
O. 28,49,00			
R. -2,46,28	26,02,72	26,02,51	-21
Capital Section			
Major Head '4552'			
O. 398,34,00	---	---	---
R. -398,34,00			
Major Head '4801'			
O. 835,22,00			
R. -374,85,72	460,36,28	460,36,28	---
Major Head '6552'			
O. 106,16,00	---	---	---
R. -106,16,00			
Major Head '6801'			
O. 1438,33,00			
S. 140,00,00			
R. -261,66,00	1316,67,00	1316,67,00	---

Source:- Appropriation Accounts

COMPOSITE GRANT

STATEMENT No.1 Major Head 2049

(Amount in ₹)

MAJOR HEAD – 2049	2009-2010	2010-2011	2011-2012	2012-2013	2013-2014
INTEREST PAYMENT					
(i) Interest on State Provident Funds (GPF)	64781162	57756197	60624291	68806516	71730997
(ii) Interest on Reserve Fund on Depreciation/ Renewal Reserve Fund	----	----	----	----	----
(iii) Miscellaneous - Other expenditure	----	----	----	----	
(iv) Interest on Defined Contribution Pension Scheme	---	---	---	---	
(v) Interest on Deposits by PSUs	----	----	----	----	
TOTAL MH '2049'	64781162	57756197	60624291	68806516	71730997

STATEMENT No. 2
MAJOR HEAD '2071'

(Amount in ₹)

MAJOR HEAD '2071' Pension & Other Retirement Benefits	2009-2010	2010-2011	2011-2012	2012-2013	2013-2014
(i) (a) Superannuation and Retirement Allowances	374405	683153	926147	87100	1083156
(ii) Commuted value of Pension	58302308	58198351	57260964	39680747	50561642
(iii) Gratuities	77462073	68288681	70651716	56540262	67296756
(iv) Contribution to Pension and Gratuities	---	---	---	---	---
(v) Family Pension Charges	---	---	---	---	---
(vi) Leave Encashment	49436519	42581014	47566900	35251711	50761472
(vii) Contribution to Provident Fund	---	372000	466000	364000	306452
(viii) Deduct amount (New Pension Scheme)	1692371	1983035	2479024	3978585	5377286
TOTAL MH'2071'	187267676	172106234	179350751	135902405	175386764

STATEMENT No 3
Loans to Govt. Servants

(In Thousands of ₹)

MAJOR HEAD '7610' Loans to Govt. Servants	2009-10	2010-11	2011-2012	2012-2013	2013-2014
(i) House Building Advance	25,00	22,49	2278	198	8
(ii) Advance for purchase of Motor Conveyance	17,39	7,84	1002	849	1024
(iii) Advance for purchase of Other Conveyance	9	3	468	232	---
(iv) Personal Computer Advance	5,44	12,68	1179	270	811
TOTAL MH'7610'	47,92	43,04	4927	1549	1843

Source : Monthly A/c

STATEMENT No 4

(In Crore of ₹)

YEAR	ACCOUNTS FIGURES			RESERVE BANK DEPOSITS M.H. 8675			DIFFERENCE		
	Dr	Cr	Net	Dr	Cr	Net	Dr	Cr	Net
2004-05	30017.11	34735.64	4718.53	34735.64	30017.11	4718.53	NIL	NIL	NIL
2005-06	5080.34	4206.73	873.61	4206.73	5080.34	873.61	NIL	NIL	NIL
2006-07	5421.22	6150.92	729.70	6150.92	5421.22	729.70	NIL	NIL	NIL
2007-08	5119.42	4862.19	257.24	4862.19	5119.42	257.24	NIL	NIL	NIL
2008-09	5435.55	7368.07	1932.52	7368.07	5435.55	1932.52	NIL	NIL	NIL
2009-10	5716.35	6817.56	1101.21	6817.56	5716.35	1101.21	NIL	NIL	NIL
2010-11	6340.41	9423.56	3083.15	9423.56	6340.41	3083.15	NIL	NIL	NIL
2011-12	7445.27	6161.35	1283.92	6161.35	7445.27	1283.92	NIL	NIL	NIL
2012-13	8189.38	4000.89	4188.49	8193.85	4000.91	4192.94	-4.47	-0.02	-4.45*
2013-14	9623.81	9801.68	177.87	9619.34	981.66	182.32	4.47	0.02	4.45

* reversal of write off of Loans to State Govt. taken place during the year 2013-14 and at present there is no difference.

STATEMENT NO.5 MAJOR HEAD '8670' - CHEQUES & BILLS

(In Thousand of ₹)

YEAR	OPENING BALANCE	AMOUNT BOOKED	AMOUNT CLEARD	CLOSING BALANCE
2006-2007	416,91,87	6562,30,84	6150,91,65	828,31,06
2007-2008	828,31,06	5263,45,31	4862,18,64	1229,57,73
2008-2009	1229,57,73	6768,98,78	7966,97,47	31,59,04
2009-2010	31,59,04	7417,91,30	6823,88,75	625,61,59
2010-2011	625,61,59	9465,30,82	9424,06,05	666,86,36
2011-2012	666,86,36	5790,62,32	6161,39,46	296,09,22
2012-2013	296,09,22	7049,84,06	4003,40,33	3342,52,95
2013-2014	3342,52,95	6504,97,76	9820,06,14	27,44,57

STATEMENT NO.6
MAJOR HEAD '8658' - SUSPENSE ACCOUNTS
(Minor Head '101'-PAO SUSPENSE)

(In Thousand of ₹)

YEAR	OPENING BALANCE	AMOUNT BOOKED	AMOUNT CLEARED	CLOSING BALANCE
2008-2009				
(i) Credit	-107	486	486	-107
(ii) Debit	2300	4521	6016	805
Net	2407(Dr)	5007	6502	912(Dr)
2009-2010				
(i) Credit	-107	2607	2641	-141
(ii) Debit	805	1558	1734	629
Net	912(Dr)	-1049	-907	770(Dr)
2010-2011				
(i) Credit	-141	648	648	-141
(ii) Debit	629	91	653	67
Net	770(Dr)	739	1301	208(Dr)
2011-2012				
(i) Credit	-141	566	839	-414
(ii) Debit	67	557	722	-98
Net	208(Dr)	9	117	316(Dr)
2012-2013				
(i) Credit	-414	140	54	-328
(ii) Debit	-98	12	127	-213
Net	316(Dr)	128	73	115(Dr)
2013-2014				
(i) Credit	-328	623	740	-445
(ii) Debit	-213	162	109	-160
Net	115(Dr)	-461	631	285(Dr)

STATEMENT NO.7 (A)
MAJOR HEAD '8658-102' - SUSPENSE ACCOUNTS (CIVIL)

(In Thousand of ₹)

YEAR	OPENING BALANCE	AMOUNT BOOKED	AMOUNT CLEARED	CLOSING BALANCE
2007-2008				
(i) Credit	2	---	2	---
(ii) Debit	148	---	149	-1
Net	146(Dr)	---	147	-1(Dr)
2008-2009				
(i) Credit	---	---	---	---
(ii) Debit	-1	---	---	-1
Net	-1(Dr)	---	---	-1(Dr)
2009-2010				
(i) Credit	---	---	---	---
(ii) Debit	-1	---	---	-1
Net	-1(Dr)	---	---	-1(Dr)
2010-2011				
(i) Credit	---	---	---	---
(ii) Debit	-1	---	---	-1
Net	-1(Dr)	---	---	-1(Dr)
2011-2012				
(i) Credit	---	---	---	---
(ii) Debit	-1	---	---	-1
Net	-1(Dr)	---	---	-1(Dr)
2012-2013				
(i) Credit	---	577	663	-86
(ii) Debit	-1	---	---	-1
Net	-1(Dr)	577	663	-85*(Cr)
2013-2014				
(i) Credit	-86	240519	240429	4
(ii) Debit	-1	---	---	-1
Net	-85(Cr)	240517	240429	3(Cr)

*Balances are due to uncredited items under e-Payment

STATEMENT NO.7 (B)
MAJOR HEAD '8658' - 108'PSB SUSPENSE

(In thousand of ₹)

YEAR	OPENING BALANCE	AMOUNT BOOKED	AMOUNT CLEARED	CLOSING BALANCE
2007-2008				
(i) Credit	-4180342	46724114	48621864	-6078092
(ii) Debit	4804	50871732	50879205	-2669
Net	-4185146(Cr)	-4147618	-2257341	-6075423(Cr)
2008-2009				
(i) Credit	-6078092	79669746	73660908	-69254
(ii) Debit	-2669	54057507	54082403	-27565
Net	-6075423(Cr)	25612239	19578505	-41689 (Cr)
2009-2010				
(i) Credit	-69254	68238874	68175642	-6022
(ii) Debit	-27565	57041226	57018075	-4414
Net	-41689(Cr)	11197648	11157567	-1608(Cr)
2010-2011				
(i) Credit	-6022	94240605	94235559	-976
(ii) Debit	-4414	63297059	63293098	-453
Net	-1608(Cr)	30943546	30942461	-523(Cr)
2011-2012				
(i) Credit	-976	61613946	61613546	-576
(ii) Debit	-453	74350401	74350084	-136
Net	-523(Cr)	-12736455	-12736538	-440(Cr)
2012-2013				
(i) Credit	-576	40034033	40008866	24591
(ii) Debit	-136	81918476	81893753	24587
Net	-440(Cr)	-41884443	-41884887	4(Cr)
2013-2014				
(i) Credit	24591	98200615	97932967	292239
(ii) Debit	24587	97605024	96154254	1475357
Net	4(Cr)	595591	1778713	-1183118(Cr)

CHAPTER-6

OTHER AREAS INVESTMENTS, LOANS & GUARANTEES Investment with various P.S.U./Autonomous Bodies

INVESTMENT MADE BY GOVERNMENT OF INDIA WITH VARIOUS P.S.U./AUTONOMOUS BODIES IN LAST THREE YEARS. Investment made by Government of India in various Public Sector Undertakings.

(In Crore of ₹)

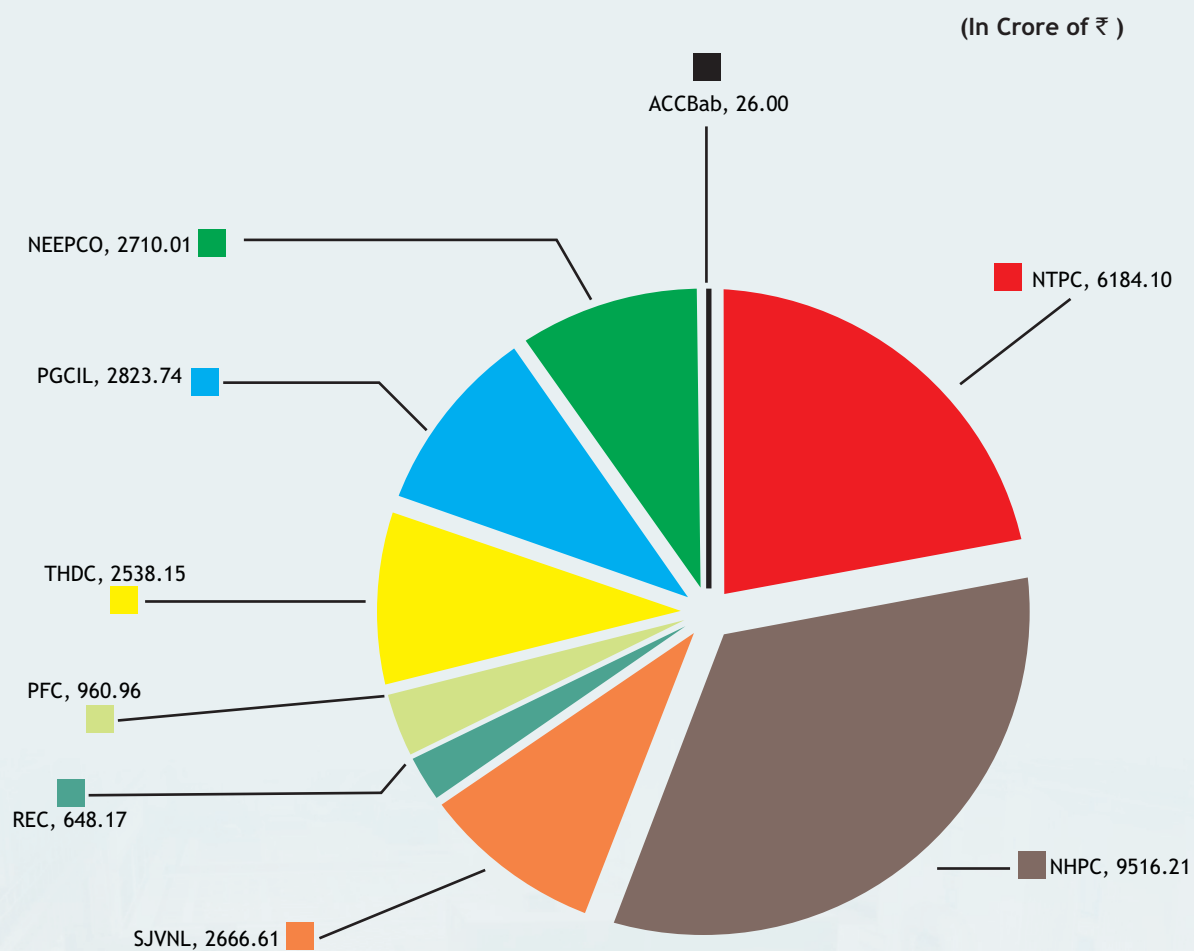
Sl. No.	Public Sector Undertakings	2011-2012	2012-2013	2013-2014	Investment as on 31.3.2014
1	National Thermal Power Corporation (NTPC)	---	-783.26	---	6184.10
2	National Hydro Electric Power Corp. (NHPC)	316.67(PPA)	---	-1107.15	9516.21
3	Satluj Jal Vidyut Nigam Limited (SJVN)	---	---	---	2666.61
4	Rural Electrification Corporation (REC)	---	---	-11.44	648.17
5	Power Finance Corporation (PFC)	(-)57.39	---	-12.11	960.96
6	Tehri Hydro Development Corporation (THDC)	45.00	89.45	30.00	2538.15
7	Power Grid Corporation of India Ltd. (PGCIL)	14.92 (PPA) (-)4.55	---	-185.19	2823.74
8	North Eastern Electric Power Corp. (NEEPCO)	376.40 127.79* (PPA)	195.78 (PPA) 30.51	62.34	2710.01
9	ACC Babcock Ltd (Alstom Project)	---	---	---	26.00
	Total	818.85	-467.52	-1223.55	28073.95

(-) figure means disinvestment admitted by O/o CGA
PPA Loan converted into equity/withdrawal of PPA

* Equity in respect of Kopili HEP transferred from M/o Home Affairs.

SOURCE: Finance Accounts & Statement No.10 &11

Investment made by Government of India
in Various Public Sector
Undertakings as on 31.3.2014



TOTAL INVESTMENTS = ₹ 28073.95 (Crore)

DIVIDEND RECEIVED IN 2013-14: PSU WISE

(In Crore of ₹)

Sl.No	Name of PSU	Final Dividend 2012-13	Interim Dividend 2013-14	Total Dividend
1	Rural Electrification Corporation (REC)	98.94	511.20	610.14
2	National Thermal Power Corporation (NTPC)	1236.82	2473.64	3710.46
3	Power Grid Corporation of India Ltd. (PGCIL)	354.85	371.80	726.65
4	Power Finance Corporation (PFC)	97.31	856.29	953.60
5	National Hydro-electric Power Corporation (NHPC)	637.40	-----	637.40
6	North Eastern Electric Power Corporation (NEEPCO)	47.69	25.00	72.69
7	Satluhj Jal Vidyut Nigam Ltd. (SJVN Ltd.)	256.00	-----	256.00
8	Tehri Hydro Development Corporation (THDC)	-----	-----	-----
9	ACC Bebcok Ltd.(Alstom Project)	0.08	-----	0.08
	TOTAL	2729.09	4237.93	6967.02

DIVIDEND RECEIVED DURING LAST THREE YEARS

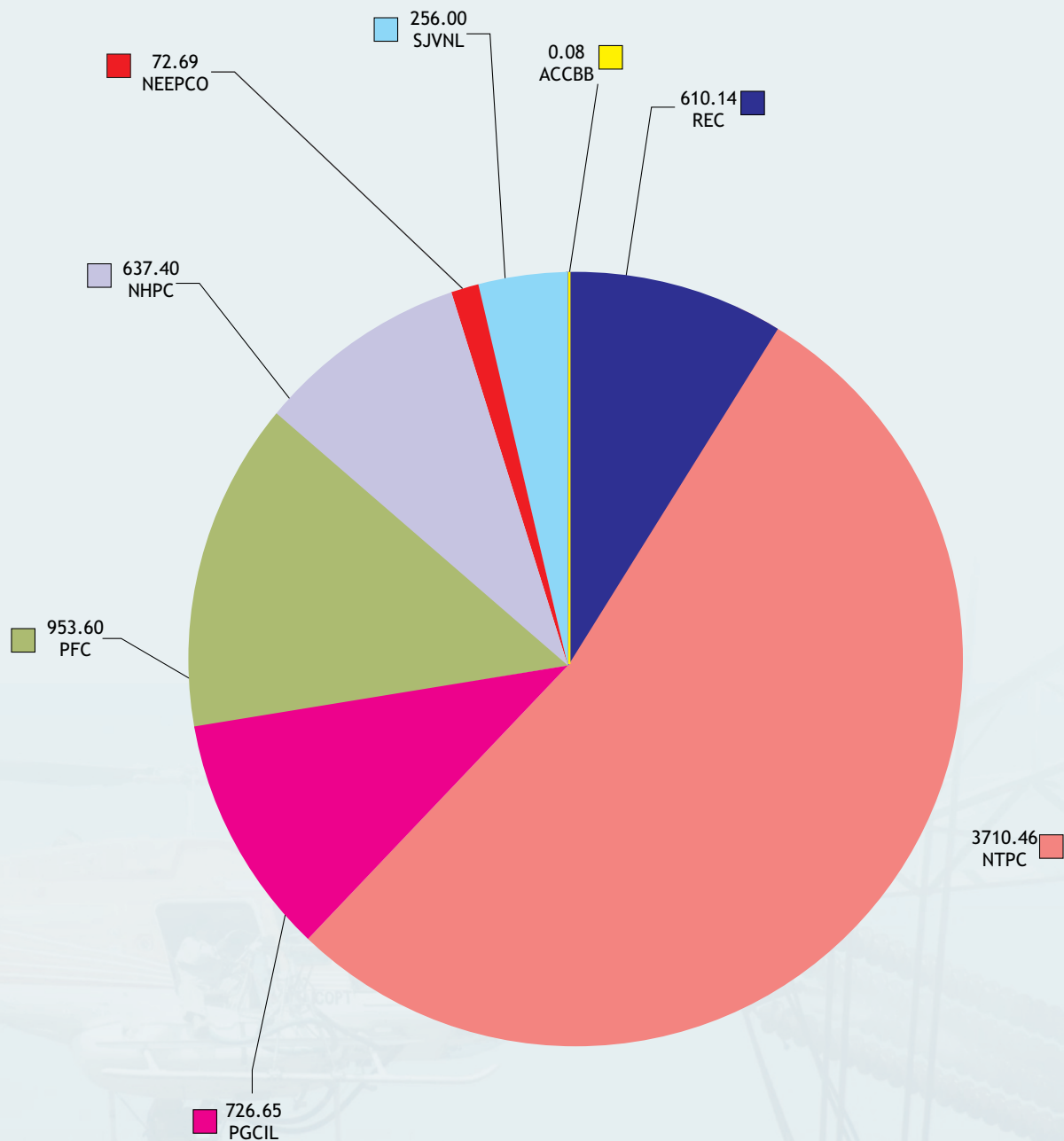
(In Crore of ₹)

S. No	Year	Total Dividend Received	Percentage increase over last year
1	2011-2012	5916.12	15.62%
2	2012-2013	6083.15	2.82%
3	2013-2014	6967.02	14.53%

Source:- SCT

DIVIDEND RECEIVED IN 2013-14: PSU WISE

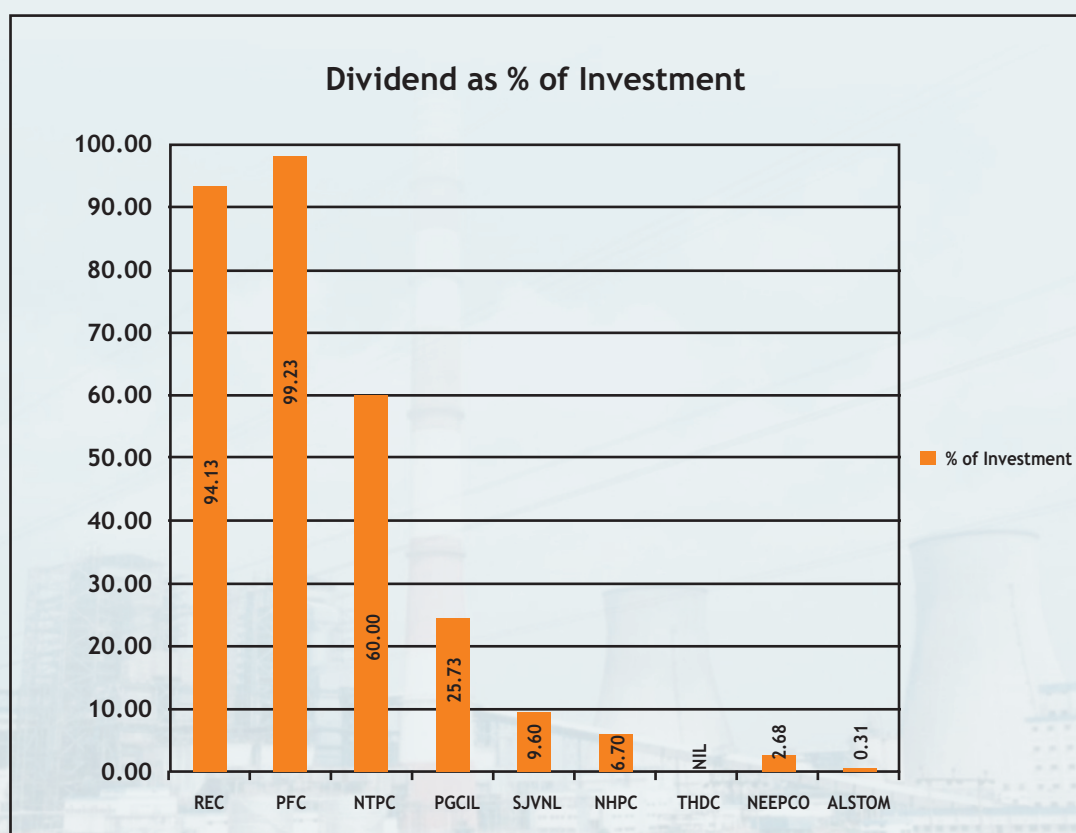
(In Crore of ₹)



COMPARISON OF INVESTMENT & DIVIDEND

(In Crore of ₹)

Name of PSU	2013-14		
	Investment	Dividend	Dividend as % of Investment
REC	648.17	610.14	94.13
PFC	960.96	953.60	99.23
NTPC	6184.10	3710.46	60.00
PGCIL	2823.74	726.65	25.73
SJVNL	2666.61	256.00	9.60
NHPC	9516.21	637.40	6.70
THDC	2538.15	---	---
NEEPCO	2710.01	72.69	2.68
ALSTOM	26.00	0.08	0.31
Total	28073.95	6967.02	24.82



Budget & Expenditure of Accelerated Power Development and Reform Programme (APDRP)

(In Crore of ₹)

Particulars	2010-11	2011-2012	2012-13	2013-14
Budget Estimates	3700.00	2034.00	3114.00	500.00
Revised Estimates	2591.00	1668.00	1500.00	700.00
Expenditure	2346.42	1667.87	1234.49	648.70

Budget & Expenditure of Rajiv Gandhi Grameen Vidyutikaran Yojana

(In Crore of ₹)

Particulars/Sector	2010-11	2011-12	2012-13	2013-14
Budget Estimates	5500.00	6000.00	4900.00	4500.00
Revised Estimates	5500.00	3544.00	2492.02	3137.65
Expenditure	5000.00	2237.31	697.94	2938.52

Expenditure made under Schemes of BEE, NPTI, CEA, CPRI and Energy Conservation for last five years

(In Crore of ₹)

Particulars	2009-10	2010-11	2011-12	2012-13	2013-14
BEE	57.84	60.97	64.00	44.10	66.72
NPTI	21.90	23.40	8.49	10.76	10.03
CEA	58.18	53.47	54.22	72.30	71.33
CPRI	41.50	61.51	64.00	40.36	17.76
Energy Conservation	18.00	127.24	49.99	37.00	16.00

SECTORAL ANALYSIS OF OTHER EXPENDITURE INCURRED AND INVESTMENT MADE IN VARIOUS PSUs UNDER MINISTRY OF POWER M.H.'4801'

(In Crore of ₹)

Particulars Sector	2009-10	2010-11	2011-12	2012-13	2013-14
HYDEL	----	-976.90	361.67	89.45	-1077.15
THERMAL	---	-412.27	---	-783.26	---
DIESEL/GAS	35.00	45.00	504.19	226.29	62.34
REC	---	-42.93	---	---	-11.44
T&D	---	-418.11	10.38	---	-185.19
GENERAL	---	---	-7.54	---	---
PFC	---	---	-57.39	---	-12.11
TOTAL	35.00	-1805.21	811.31	-467.52	-1223.55

HYDEL : NHPC, SJVN (formerly NJPC), THDC & SARDAR SAROVAR
 THERMAL : DVC, NTPC & BTPS/ (formerly BTPP)
 DIESEL/GAS : NEEPCO TRANSMISSION &
 TRANSMISSION & DISTRIBUTION : PGCIL, LDS & HVDC
 GENERAL : PFC, NPTI (PSTI, HLTC) AND OTHERS

SOURCE: Statement No.10



**OTHER AREAS
INVESTMENTS AND OTHER EXPENDITURE
MAJOR HEAD “4801”
INVESTMENT MADE AND OTHER EXPENDITURE INCURRED
BY GOVERNMENT OF INDIA WITH
VARIOUS P.SU.s/AUTONOMOUS BODIES
DURING LAST FOUR YEARS**

(In Crore of ₹)

Sl.No.	Public Sector Undertaking	2010-2011	2011-2012	2012-2013	2013-2014
1	National Thermal Power Corporation	-412.27	---	-783.26	---
2	National Hydro Electric Power Corp.	-559.13	PPA 316.67	---	-1107.15
3	Satluj Jal Nigam Ltd.	-415.00	---	---	---
4	Rural Electrification Corporation	-42.93	---	---	-11.44
5	Power Finance Corporation	0.00	-57.39	---	-12.11
6	Tehri Hydro Development Corporation	-2.78	45.00	89.45	30.00
7	Power Grid Corporation of India Ltd.	-420.88 2.78	14.93 -4.55	---	-185.19
8	North Eastern Electric Power Corp.	45.00	PPA 376.40 127.79	PPA 195.78 30.51	62.34
9	Expenditure on other Schemes	---	---	---	---
10	ACC Bobcock Ltd	---	---	---	---
11	Badarpur Thermal Power Project	---	---	---	---
	Total	-1805.21	818.85	-467.52	-1223.55

Note:
SOURCE: Finance Accounts & Statement No.10

STATEMENT SHOWING GRANTS-IN-AID RELEASED TO VARIOUS AUTONOMOUS BODIES/STATUTORY BODIES AND NGOs FOR THE LAST THREE YEARS

(In Crore of ₹)

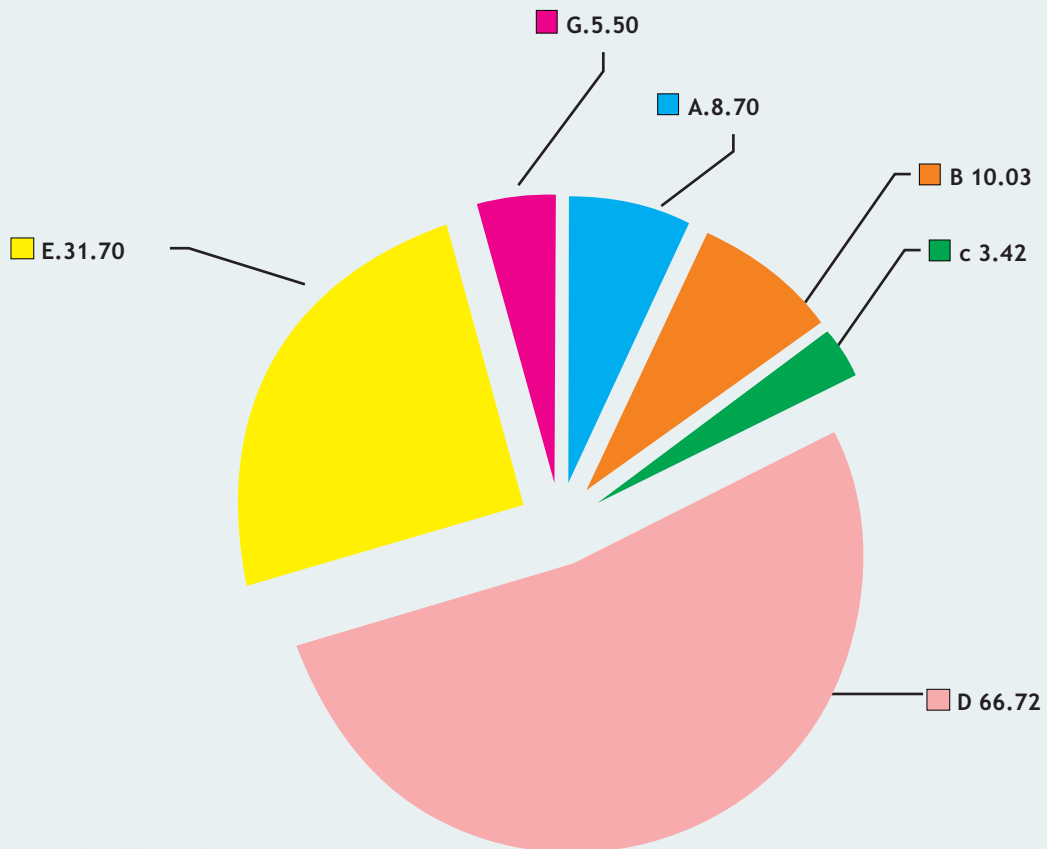
Sl. No.	Name of Undertakings/Institute	Revised Estimates			Grant Released		
		2011-2012	2012-2013	2013-2014	2011-2012	2012-2013	2013-2014
1	Power Finance Corporation (R-APDRP)	68.00	117.00	75.00	67.87	17.04	8.70
2	National Power Training Institute	8.49	10.85	12.40	8.49	10.76	10.03
3	Central Power Research Institute	75.00	80.00	5.66	64.00	40.36	3.42
4	Bureau of Energy Efficiency.	65.00	58.80	75.00	64.00	44.10	66.72
5	Central Electricity Regulatory Commission	33.29	32.28	36.20	31.48	25.06	31.70
6	Joint Electricity Regulatory Commission for Manipur & Mizoram	2.33	2.24	----	1.56	1.08	----
7	JERC for Goa & Union Territories other than Delhi	4.00	4.00	5.50	3.80	4.00	5.50
	Total	256.11	305.17	212.36	241.20	142.40	126.07

Source: Monthly Accounts



EXPENDITURE (GRANTS-IN-AID) FINANCIAL YEAR 2013-2014

(In Crore of ₹)



- A : PFC(R-APDRP)
- B : National Power Training Institute
- C : Central Power Research Institute
- D : Bureau of Energy Efficiency
- E : CERC
- F : Regulatory commission for Manipur, Mizoram, Aizawl (No Expenditure)
- G : JERC for Union Territories & Goas other than Delhi

MINISTRY OF POWER
LOANS PAYMENTS, REPAYMENTS & OUTSTANDING
AS ON 31.03.2014

(In Crore of ₹)

Particulars	Outstanding as on 31.3.2013	Loan paid during 2013-2014	Loan refunded during 2013-2014	Outstanding as on 31.3.2014
A. Loans to Public Sector Undertakings	8566.52	1316.67	22.23	9860.96
B. Loans to State Electricity Boards	117.07	---	0.69	116.38
C. Loans to State Govts.	3.70	---	---	3.70
D. Loans to Govt. Servants	2.59	0.18	0.64	2.13
E. Loans to UT Govt. of Delhi	3326.39	----	----	3326.39
Total	12016.27	1316.85	23.56	13309.56

SOURCE: FINANCE ACCOUNTS (STATEMENTS 15)

MINISTRY OF POWER
LOANS, PAYMENTS, REPAYMENTS & OUTSTANDING AS ON 31.03.2014
A. LOANS TO PSUs & STATUTORY BODIES/COMPANIES

(In Crore of ₹)

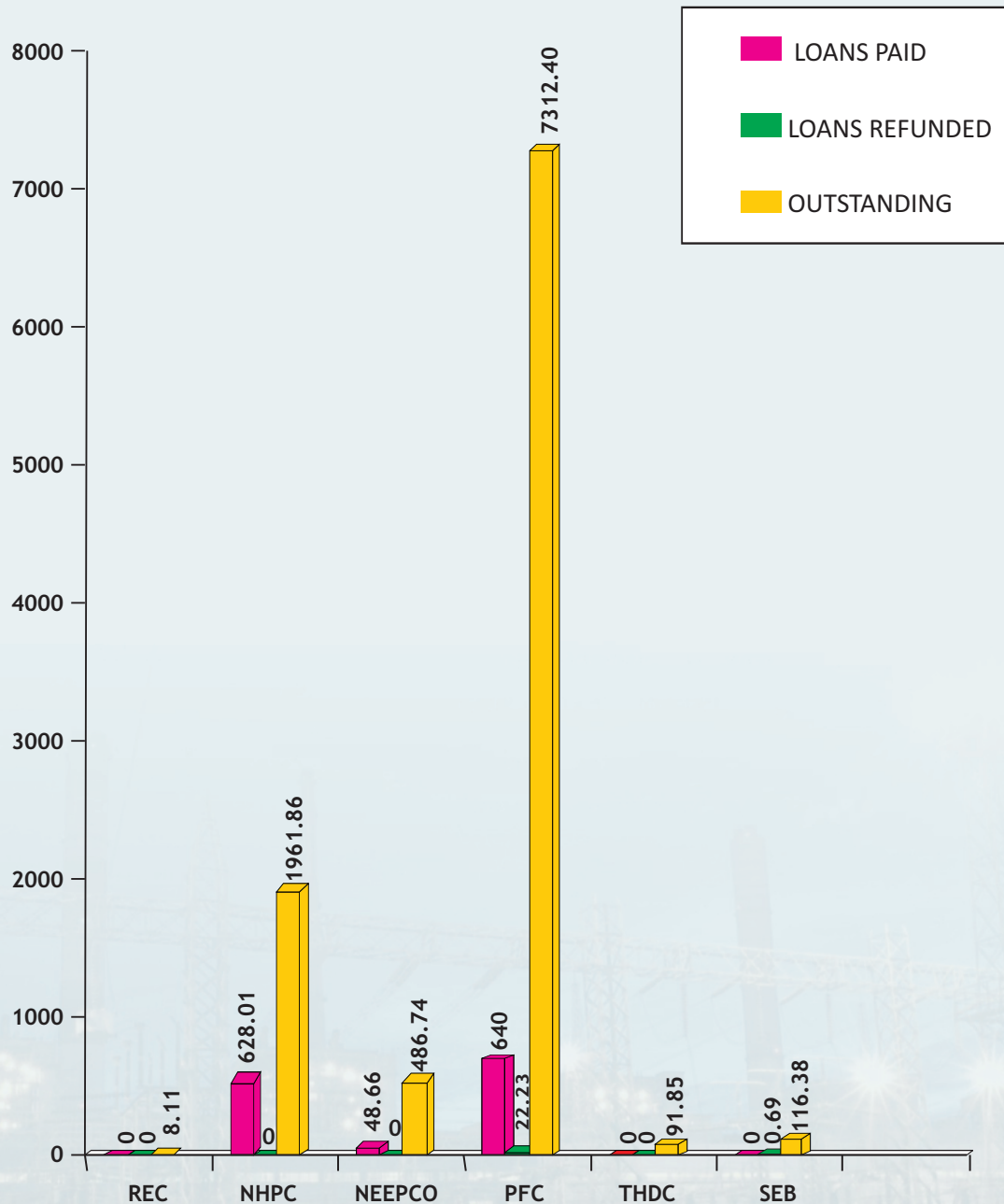
S. No.	Particulars	Outstanding as on 31.3.2013	Loan paid during 2013-14	Loans refunded during 2013-2014	Balance as on 31-3-2014
1	Rural Electrification Corp.	8.11	---	---	8.11
2.	Damodar Valley Corp.	---	---	---	---
3.	National Hydro-electric Power Corpn	-334.96 1668.81	628.01	---	1961.86
4.	North Eastern Electric Power Corpn.	438.08	48.66	---	486.74
5	Power Finance Corporation Ltd	6694.63	640.00	22.23	7312.40
6	T.H.D.C.	91.85	---	----	91.85
	Total (A)	8566.52	1316.67	22.23	9860.96
B	State Electricity Boards	117.07	---	0.69	116.38
	Total (B)	117.07	---	0.69	116.38
	Total (A)+(B)	8683.59	1316.67	22.92	9977.34

Source: Finance Accounts

MINISTRY OF POWER
LOANS PAYMENTS, REPAYMENTS & OUTSTANDING
AS ON 31.03.2014

LOANS TO PSUs & STATUTORY BODIES/COMPANIES

(In Crore of ₹)



MINISTRY OF POWER
LOANS PAYMENTS, REPAYMENTS & OUTSTANDING
AS ON 31.3.2014

C. LOANS TO STATE GOVERNMENTS

(₹ in Lakhs)

S. No.	Particulars	Outstanding as on 31.3.2013	Loans repaid during 2013-2014	Outstanding as 31-3-2014
1.	Andhra Pradesh	-2.00	0	-2.00
2.	Assam	-65.86	0	-65.86
3.	Bihar	-1.71	0	-1.71
4.	Haryana	-3.08	0	-3.08
5.	Himachal Pradesh	-13.12	0	-13.12
6.	Jammu & Kashmir	-3.16	0	-3.16
7.	Kerala	-0.50	0	-0.50
8.	Karnataka	-11.50	0	-11.50
9.	M.P& Chhatisgarh	-7.57	0	-7.57
10.	Maharashtra	-14.77	0	-14.77
11.	Manipur	59.78	0	59.78
12.	Nagaland	127.20	0	127.20
13.	Orissa	337.26	0	337.26
14.	Punjab	0	0	0
15.	Rajasthan	-1.82	0	-1.82
16.	Tamil Nadu	-0.38	0	-0.38
17.	West Bengal	0	0	0
18.	Gujarat	3.43	0	3.43
19.	Meghalaya	-484.51	0	-484.51
20.	Goa	270.31	0	270.31
21.	Mizoram	0	0	0
22.	Arunachal Pradesh	-15.88	0	-15.88
23.	Tripura	-1.37	0	-1.37
	TOTAL	370.75	0	370.75

(-) Balances are due to receipt of repayment after writeoff of Loans in pursuance to Finance Commission's recommendations. The adjustment of these (-) balance is under process in consultation with Ministry of Finance.

Source: Finance Accounts & Statement No.15

SECTORAL ANALYSIS OF LOANS GIVEN TO VARIOUS PSUs UNDER MINISTRY OF POWER “M.H.6801”

(In Crore of ₹)

Particulars/Sector	2010-11	2011-12	2012-13	2013-14
HYDEL	781.00	398.44	270.37	628.01
THERMAL	---	---	---	---
DIESEL/GAS	---	163.13 195.77*	79.17	48.66
REC	---	---	---	---
T&D	---	---	---	---
GENERAL	2246.42	1600.00	1217.45	640.00
TOTAL	3027.42	2357.34	1566.99	1316.67

*Loan of ₹ 195.77 crores adopted from MHA (Loans outstanding against the Doyang Project to be converted into equity.)

HYDEL : NHPC, SJVN (formally NJPC), THDC & SARDAR SAROVAR
 THERMAL : DVC, NTPC & BTPS/BTPP
 DIESEL/GAS : NEEPCO
 T&D : PGCIL, LDS & HVDC
 GENERAL : PFC, PSTI, HLTC AND OTHERS



GUARANTEE STATEMENT FOR THE YEAR 2013- 2014

(In Crore of ₹)

Sl. No.	NAME OF PSUs	TOTAL NO OF GUARANTEE	OUTSTANDING AMOUNT OF LOAN GUARANTEED AS ON 31.03.2014	GUARANTEE FEE		ENTITY GIVING LOAN
				RECEIVABLE	RECEIVED	
1	NHPC	5	2164.81	28.84	28.84	EDC (Canada) (1), JBIC (Japan) (3) & DEUTSCHE Bank (Japan)(1)
2	THDC	1	93.31	0.79	0.79	IBRD Loan (World Bank) (1)
3	NTPC	5	2629.42	34.96	34.96	IBRD Loan (World Bank) (1) & JBIC (Japan) (4)
4	SLR BONDS (DVC)	2	7000.00	70.00	70.00	Domestic Bonds (2)
	DVC	1	19.50	0.25	0.25	EXIM Bank (1)
5	NEEPCO	1	464.74	2.89	2.89	KfW (Germany) (1)
6	SJVNL	2	2243.13	23.86	23.86	Nordic Invesment Bank (Finland) (1) & World Bank (1)
7	PFC	3	290.24	1.10	1.10	KfW (1), ADB (1) & Natixis Banques Popularities (Formerly Credit National) (1)
8	REC	5	1984.90	18.64	18.64	JICA (Japan) (2) & KfW (Germany) (3)
9	PGCIL	16	18869.32	198.32	198.32	IBRD (6), NATIXIS (1), EUROPEAN INVESTMENT BANK (1), ADB (7) & JBIC (Japan) (1)
TOTAL		41	35759.37	379.65	379.65	

Note: KfW Kreditanstalt fur Wiederaufbau
JICA Japan International Cooperation Agency
ADB Asian Development Bank

CHAPTER-7

INTERNAL AUDIT

The Internal Audit Wing of Ministry of Power endeavors to ensure adoption of sound procedure, regularities and financial propriety in transactions of accounts.

(A) Organization

The Internal Audit Wing of Ministry of Power is supervised by Assistant/Deputy Controller of Accounts and headed by Controller of Accounts.

(B) Duties entrusted to the Internal Audit Wing

Thirty seven audits were assigned to the Internal Audit Wing of Ministry of Power for the financial year 2013-14, detailed as under:-

1. Compliance Audit of 21 DDOs/PAOs of Ministry of Power.
2. Performance Audit of 4 districts in respect of Rajiv Gandhi Grameen Viduyutikaran Yojana (RGGVY).
3. Performance Audit of Rural Electrification Corporation (REC): Nodal Agency for RGGVY.
4. Performance Audit of 4 Distribution Companies (DISCOMs) in respect of Restructured-Accelerated Power Development and Reforms Programme (R-APDRP).
5. Performance Audit of Power Finance Corporation (PFC): Nodal Agency for R-APDRP.
6. Reconciliation of figures of Bhakra Beas Management Board (BBMB), Nangal.
7. Audit of Grantee Institutions under MoP viz. Bureau of Energy Efficiency (BEE), National Power Training Institute (NPTI), Central Electricity Regulatory Commission (CERC), Forum of Regulators (FoR) & Central Power Research Institute (CPRI).

(C) Status of Audit Paras as on 31/03/2014

Opening Bal. of Paras as on 01/04/2013	No. of Paras added during 2013-14	No. of Paras settled during 2013-14	Closing Balance of Paras as on 31/03/2014
424	149	87	486

(D) Break-up of outstanding Audit Observations & Inspection Reports as on 31/03/2014.

The Organization-wise break-up of Outstanding Audit Observations & Inspection Reports as on 31/03/2014 is as under:-

S.No.	Name of Organization/Office	No. of Inspection Reports	No. of Paras
01	Ministry of Power	03	60
02	Central Electrical Authority	16	204
03	Appellate Tribunal for Electricity	01	26
04	BBMB, Nangal	01	8
05	JERC, Gurgaon	01	12
06	NPTI, Faridabad	01	21
07	CPRI Bangalore	01	13
08	Forum of Regulators (FoR)	01	07
09	Bureau of Energy Efficiency	03	40
10	Special Audit (AG&SP)	01	04
11	RGGVY Scheme	14	14
12	R-APDRP Scheme	16	16
13	Pr. AO Admn. & Accounts	02	10
14	PAO (Secretariat & BMCC)	02	13
15	PAO, CEA, New Delhi	01	8
16	PAO, CEA, Bengaluru	01	09
17	BBMB, Chandigarh	01	10
18	CERC, New Delhi	01	11
	Total	67	486

(E) Special Achievements of Internal Audit Wing during the year 2013-14:-

(i) ₹ 243.58 Crore deposited to Government's Exchequer as a result of audit observations.

Internal Audit Wing of the office of Controller of Accounts, Ministry of Power conducts the audit of various schemes of Ministry of Power. During the period 2013-14, it has conducted audits of Rajiv Gandhi Grameen Vidyutikaran Yojana (RGGVY) and Restructured-Accelerated Power Development & Reforms Programme (RAPDRP) schemes of Ministry of Power. During audits, it was observed that huge sums which were required to be refunded to the government's accounts, by Nodal Agencies & Implementing Agencies, have been retained by them in their accounts. All these agencies were advised to remit the same immediately to the Ministry of Power for credit to the government's accounts. After continuous follow up by the Internal Audit Wing a sum of ₹. 243.58 Crore have been received and deposited in the Government's Exchequer during 2013-14. The details are as follows:-

Name of the Schemes and Gist of Audit Observations.

Sl. No.	Name of the Scheme	Amount refunded (₹. in crore) 2012-2013	Amount refunded (₹. in crore) 2013-2014	Observation
1	Rajiv Gandhi Grameen Vidyutikaran Yojana (RGGVY).	345.41	214.58	The audit pointed out that Interest accrued on subsidy released by the Govt. of India was neither reported nor deposited to the Government accounts by the implementing agencies. The Implementing agencies have started refunding the interest earned by them.
2	Restructured-Accelerated Power Development & Reforms Programme (RAPDRP).	41.29	29.00	The audit pointed out that some of the projects which have been funded subsequently found to be ineligible for assistance, as such the amount released should be recovered with interest.
3	Accelerated Generation & Supply Programme" (AG&SP).	200.00		The audit pointed out that the Implementing agencies have not deposited unutilized & excess subsidy to the Government accounts
Grand Total		586.70	243.58	

It may be seen from the above that during last two years, recovery of ₹.830.28 crore has been made due to internal audit observations.

The Internal Audit Wing brought to the notice huge unspent balances/unutilized amounts under RGGVY including interest earned out of RGGVY funds and also brought to the notice huge diversion of funds and unutilized amounts under R-APDRP received by DISCOMs. These inputs from audit resulted into optimization of drawal of funds from the Government, thus rationalization in the expenditure and reduction in unspent balances.

(ii) ₹ 9.27 Crore deposited to Government's Exchequer during the year 2013-14 as a result of audit observations on unspent balances etc. with grantee institutions.
The details are as follows:-

Sl. No.	Name of Grantee Institutions	Unspent Grants	Interest earned	Others	Total Amount deposited (Figures in Rupees)
1	Central Power Research Institute, Bengaluru	83,66,225	5,41,89,610	---	6,25,55,835
2	Bureau of Energy Efficiency, New Delhi	68,95,299	2,16,43,022	16,06,506	3,01,44,827
3	Forum of Regulators, New Delhi	---	36,175	---	10,44,718
	Total	1,52,61,524	7,58,68,807	16,06,506	9,27,36,837

(F) Major Audit Observations

(i) Diversion of Funds to the tune of ₹ 1496.72 Crore under R-APDRP Scheme.

It has been observed that various DISCOMs under R-APDRP Scheme viz. Jaipur Vidyut Vitran Nigam Limited (JVVNL) Jaipur, Maharashtra State Electricity Distribution Company Limited (MSEDCL) Mumbai, Andhra Pradesh Central Power Distribution Company Limited (APCPDCL), Hyderabad, Madhyanchal Vidyut Vitaran Nigam Limited (MVVNL), Lucknow, Tamil Nadu Generation & Distribution Corporation Limited (TANGEDCOL) Chennai, Bengaluru Electricity Supply Corporation Limited (BESCL), Bengaluru and Bihar State Power Holding Company Ltd. (BSPHCL), Patna have diverted the Scheme's funds to the tune of ₹ 1496.72 Crore, in total contravention to the Government Guidelines.

(ii) Non-realization of Outstanding Testing fees/Consultancy charges/Training fees amounting to ₹ 28.51 Crore.

The outstanding testing fees/consultancy charges/training fees to the tune of ₹.28.51 Crore have not been realized by the Grantee institutions viz. Central Power Research Institute (CPRI), Bengaluru and National Power Training Institute (NPTI).

- (iii) **The amount of unspent Net Excess Net Present Value (NPV) of interest subsidy of ₹ 52.01 Crore under Accelerated Generation & Supply Programme (AG&SP) Scheme.**

The amount of unspent Net Excess Net Present Value (NPV) of interest subsidy of ₹ 52.01 Crore under Accelerated Generation & Supply Programme (AG&SP) with Power Finance Corporation (PFC) and Rural Electrification Ltd. (REC) were observed by audit.

- (iv) **Non-recovery of Loan of ₹ 2043.43 Crore after completion of moratorium period.**

The Power Finance Corporation Ltd. (PFC) has not recovered the loan of ₹ 2043.43 Crore after completion of moratorium period from various implementing agencies after completion of moratorium period.

- (v) **Blockage of Funds to the tune of ₹ 1532.50 Crore under R-APDRP Scheme.**

The Blockage of funds to the tune of ₹ 1532.50 Crore by various DISCOM under R-APDRP Scheme viz. Punjab State Power Corporation Limited (PSPCL), Patiala, Himachal Pradesh State Electricity Board Limited (HPSEB) Shimla, West Bengal State Electricity Distribution Company Limited (WBSEDCL) Kolkata, State Electricity Board (SEB), Kerala, Uttar Haryana Bijli Vitran Nigam Ltd (UHBVNL), Haryana, Madhyanchal Vidyut Vitaran Nigam Limited (MVVNL), Lucknow, Maharashtra State Electricity Distribution Company Limited (MSEDCL), Mumbai, Uttarakhand Power Corporation Limited (UPCL), Uttarakhand, Andhra Pradesh Central Power Distribution Company Limited (APCPDCL), (Andhra Pradesh) have been observed.

- (vi) **Non-refund of ₹ 354.70 crore towards interest earned out of RGGVY Funds by Rural Electrification Limited (REC), New Delhi.**

It has been observed that the REC, New Delhi has not refunded a sum of ₹ 354.70 crore towards interest earned out of RGGVY Funds.

Statutory Audit Paras of MoP, PSUs etc

The Position of pending/settled Paras as on 31/3/2014 has been as under

Paras	Number of paras outstanding at the beginning of the year	Number of paras Settled during the year	Number of paras Raised during the year	Number of paras outstanding at the end of the year	Pending with MoP	Pending with Audit
Commercial paras	13	4	5	14	13	1
Civil Paras	--	--	3	3	2	1
Total	13	4	8	17	15	2

